

## 41

# Stomach

Scott A. Hundahl, John S. Macdonald, and  
Stephen R. Smalley

**N**eoplasms of the stomach encompass both benign and malignant tumors, with more than 95% of the latter consisting of adenocarcinomas. Until approximately 1980, gastric cancer was the most common solid organ tumor in the world, and today it is eclipsed only by lung cancer in incidence and mortality.<sup>1</sup>

This chapter addresses the classification, epidemiology, staging, and evidence-based treatment of gastric adenocarcinoma. Less-common gastric neoplasms, such as gastrointestinal stromal sarcomas (GIST), carcinoid tumors, and gastric lymphomas, are comprehensively reviewed in other chapters. Despite the necessary emphasis on new findings and improved treatments, background items of historical significance are also mentioned, lest we underappreciate previous work and the difficulty of progress.

## Gastric Adenocarcinoma

### Classification

Borrmann first characterized gastric carcinoma on the basis of gross characteristics in 1926, based on a review of 5,000 European cases.<sup>2</sup> He described four macroscopic tumor growth patterns: (1) type I, nodular polypoid tumor without ulceration and usually with a broad base; (2) type II, a fungating, exophytic, circumscribed tumor with defined sharp margins, devoid of ulceration except at its dome; (3) type III, an ulcerating tumor with a penetrating, infiltrating ulcer base; (4) type IV, a diffuse thickening of the gastric wall without a discretely margined mass or ulceration, corresponding to the "leather bottle," nondistensible stomach termed linitis plastica. Still used today, the Borrmann classification has proved useful in guiding surgical treatment, especially the extent of gross tumor clearance necessary for reliable negative margin resection.

The histology of gastric adenocarcinoma falls into two distinct subtypes, first identified by the Finnish authors Jarvi and Lauren in 1951 and refined in 1965<sup>3,4</sup>: (1) intestinal type and (2) diffuse type. Intestinal-type cancers (Figure 41.1), often found in association with chronic atrophic gastritis and intestinal metaplasia, demonstrate gland formation and locally/progressively invade the gastric wall. Diffuse-type cancers (Figure 41.2) present as a sheet of discohesive individual cells that diffusely spread within the gastric wall, often spreading considerable distances from the site of origin. Diffuse tumors elicit a particularly brisk scirrhous proliferation of fibroblasts.

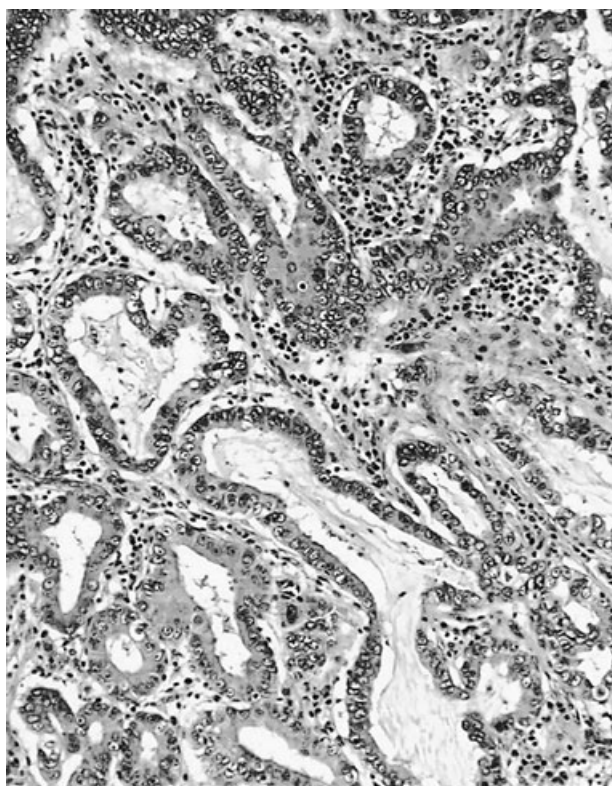
Histoepidemiologically, gastric adenocarcinomas generally sort into three broad patterns, based on simple combinations of Lauren type and location within the stomach.<sup>5</sup>

1. Intestinal-type tumors arising in the antrum or antral–corpus junction (*Helicobacter pylori* associated)
2. Diffuse-type cancers involving the corpus (*H. pylori* associated)
3. Intestinal-type cancers of the gastroesophageal junction

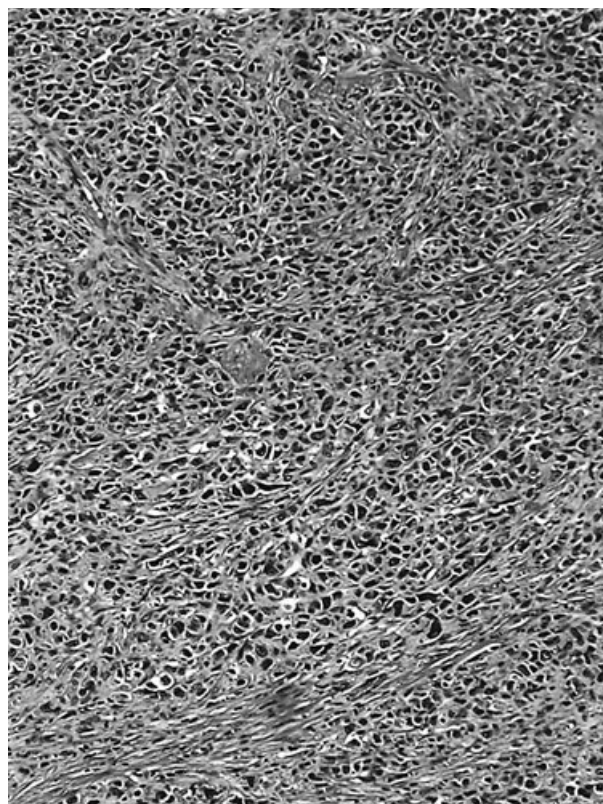
In regions of high gastric cancer incidence, approximately two-thirds of the incident cancers are of the intestinal-antral type associated with chronic *Helicobacter pylori* infection, multifocal atrophic gastritis, and intestinal metaplasia. This process usually begins at the lesser curve and the antral–corpus junction, and this is the most frequent site of cancer in high-incidence regions of the world. In such areas, most of the remaining cancers are also associated with *H. pylori* infection, but not intestinal metaplasia, and afflict younger age groups (usually those under 50 years). In this presentation, the cancer is of the diffuse type involving the body of the stomach and is associated with a brisk mucosal inflammatory infiltrate related to the *H. pylori* infection. *Helicobacter pylori* (see below) is therefore associated with both the antral-intestinal and the corpus-diffuse patterns.<sup>6,7</sup> Gastroesophageal junction (GE junction) tumors, on the other hand, tend to be associated with Barrett's metaplasia of the esophagus and are proportionately far less common in high-incidence regions but are an increasingly frequent subtype in low-incidence areas.

For the sake of completeness, a somewhat less common fourth subset of gastric cancer is also seen: intestinal-type cancers of the corpus associated with chronic autoimmune gastritis, G-cell hyperplasia, and achlorhidria. This less-common subtype is usually seen in Northern Europeans.<sup>5</sup>

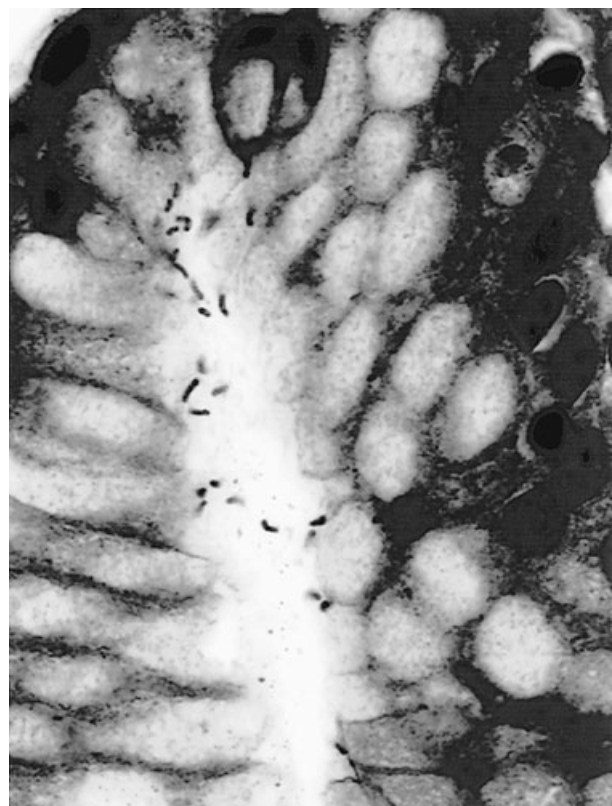
Before the development of antral–intestinal-type adenocarcinoma, antecedent histologic changes occur that can be viewed as tissue markers along the multistep path to frank neoplasia. Multifocal atrophic gastritis, literally a thinning, chronic inflammation of the gastric mucosa, is generally thought to be the result of decades of superficial gastritis associated with *H. pylori* infection (Figure 41.3) and other factors. So-called intestinal metaplasia (Figure 41.4) is the characteristic histologic feature of atrophic gastritis, and it occurs in two forms: (1) complete type intestinal metaplasia and (2) incomplete type intestinal metaplasia. Complete type intestinal metaplasia (Figure 41.4) closely duplicates the mucosa of the small intestine, with small intestine-like mucin-negative



**FIGURE 41.1.** Intestinal-type cancer. Hematoxylin and eosin (H&E). (Courtesy of Alfredo Asuncion, M.D.)



**FIGURE 41.2.** Diffuse-type cancer. H&E. (Courtesy of Alfredo Asuncion, M.D.)



**FIGURE 41.3.** *Helicobacter pylori* (small rodlike organisms in crypt), Warthin-Starry stain. 100 $\times$ . (Courtesy of Alfredo Asuncion, M.D.)



**FIGURE 41.4.** Intestinal metaplasia. H&E. Goblet cells, not normally seen in gastric mucosa, are numerous. (Courtesy of Alfredo Asuncion, M.D.)



absorptive cells and Alcian blue-positive, sialomucin-positive goblet cells. This process usually begins at the antral–corpus interface, especially along the lesser curve near the incisura.<sup>8</sup> When antral-intestinal metaplasia is still of limited area and spotty, and the remaining oxyntic gastric mucosa is still pumping out acid normally, peptic ulceration of affected areas is frequent, hence explaining the historical association between gastric ulcer and gastric cancer. Incomplete intestinal metaplasia represents a more-advanced process in which absorptive enterocytes disappear in favor of columnar, brush-border-free, colon-like cells with prominent mucous droplets and sulfomucins. Additionally, in incomplete intestinal metaplasia, Paneth cells are absent.<sup>8</sup> In both types of intestinal metaplasia, cells produce enzymes not normally present in the stomach, including sucrase, aminopeptidase, disaccharidases, and, most-importantly, alkaline phosphatase.<sup>9</sup> The latter enzyme may be used to grossly stain and map the distribution of intestinal metaplasia within the stomach *ex vivo*.<sup>8</sup>

Of the many alternative histologic gastric cancer classification schemes based on morphology, such as the World Health Organization Classification,<sup>10</sup> or histogenesis-based classifications such as that of Mulligan and Rember,<sup>11</sup> degree of differentiation such as Broder's classification<sup>12</sup> and the Nagayo–Komagome classification,<sup>13</sup> or classifications that include growth pattern such as the Ming classification,<sup>14</sup> none has proven of more “beyond-TNM” prognostic value than the Goseki classification.<sup>15,16</sup> In the Goseki scheme, degree of tubular differentiation (well versus poor) is combined with mucin staining pattern (mucin rich versus mucin poor) to divide gastric adenocarcinomas into four groups. Although of apparent prognostic value, it has yet to find widespread use.

## Epidemiology

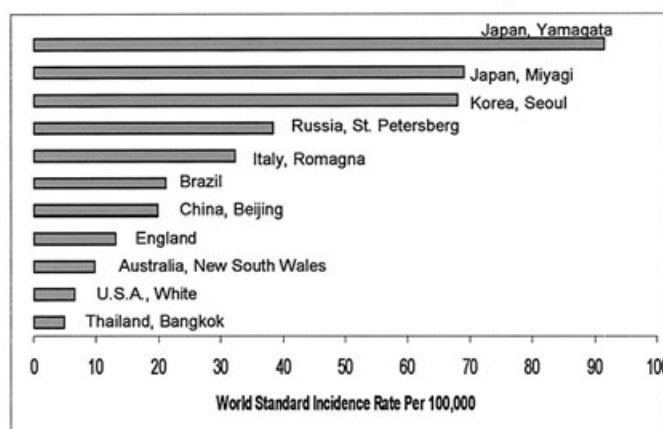
In incidence and mortality, gastric cancer ranks as the second in the world.<sup>1</sup> In raw numbers, it ranks third.<sup>1,17</sup> Of the estimated global cancer burden of 10 million cases in the year 2000, 876,000 are stomach cancers.<sup>1,17</sup> An estimated 38% of incident cases in the world occurs in China, where it is the most common cancer in both males and females.<sup>18</sup> In almost all registries, gastric cancer incidence for males is approximately twice that of females.<sup>19</sup>

Figure 41.5 depicts widespread variation in gastric cancer incidence in various population-based registries around the world. The registries selected for this figure reflect those with both high numbers of incident cases and relatively low death-certificate-only cases, which suggests good case-finding. The highest world standard incidence rate (91.3 cases per age-standardized 100,000) is reported from Yamagata, Japan. The lowest rates are reported from Bangkok, Thailand, as well as from England, Australia, and the United States.

Age-adjusted gastric cancer incidence rates are declining in most countries throughout the world.<sup>18</sup> The age adjustment of such rates tends to obscure the fact that, as a result of population growth and aging, the numerical burden of gastric cancer cases is actually expected to increase by 30% in 2010, to approximately 1 million cases.<sup>18</sup>

Unifying a vast body of epidemiologic, pathologic, and biologic research, Correa in 1975 proposed a multistep, multicausal model of gastric carcinogenesis, which he refined in 1988 and again in 1992.<sup>20–22</sup> Chronic gastric mucosal irrita-

**Incidence of Gastric Adenocarcinoma, Males**



**FIGURE 41.5.** World Standard incidence of gastric adenocarcinoma (rate per 100,000 World Standard population, males). (Data from Cancer in Five Continents,<sup>19</sup> vol VIII.)

tion, particularly that associated with the gastric mucosal bacterium *Helicobacter pylori*,<sup>23–25</sup> initiates a superficial gastritis, which, especially in a setting of a diet rich in salt-preserved foods and high NaCl intake,<sup>26</sup> progresses to atrophic gastritis and intestinal metaplasia (first the complete type and subsequently the higher-risk incomplete type). This transformation, and the subsequent march to dysplasia and cancer, is facilitated by diminished oxyntic acid output, increasing gastric pH, bacterial growth, and high-nitrate-containing diet. In such an intragastric environment, dietary nitrates are converted to carcinogenic *N*-nitroso compounds.<sup>27–33</sup> Many other carcinogenic compounds, such as polycyclic aromatic hydrocarbons, are also implicated. Certain ingested compounds, such as vitamin C, can interrupt this process.<sup>34–36</sup> Additional risk factors for epidemic gastric cancer include smoking and a diet deficient in fresh fruits, vegetables, and antioxidants.<sup>26,37,38</sup> Blood group A,<sup>39</sup> gastric ulcer,<sup>40</sup> ionizing radiation,<sup>41,42</sup> family history,<sup>39,43–52</sup> and previous gastric resection<sup>53</sup> are also associated risk factors.

A vast body of data now supports *Helicobacter pylori* as a key factor in epidemic gastric cancer,<sup>23–25</sup> and the International Agency for Research on Cancer (IARC) has recognized it as a human carcinogen with both direct and indirect effects.<sup>54</sup> Strains containing the *cagA* gene appear more dangerous.<sup>55–57</sup> Summarizing a large body of surveillance data, Parkin and colleagues observe that more than 80% of individuals in developing countries are infected with *H. pylori*. The figure for developed countries is approximately 50%.<sup>18,58</sup> An odds ratio for *H. pylori* and gastric cancer of 2.1 has been estimated.<sup>18,58</sup> Based on this, Parkin and colleagues estimate that 42% of the world total gastric cancer cases can be attributed to the impact of infection with this bacterium.<sup>18</sup>

Decades-long *H. pylori* infection, usually starting in childhood, begets superficial gastritis and chronic atrophic gastritis and intestinal metaplasia, which, once established, usually persists even after the *H. pylori* infection has disappeared because of the resulting achlohydric gastric luminal environment (the bacterium requires an acid environment to live). Atrophic gastritis and intestinal metaplasia were once believed to be irreversible. This does not appear to be entirely true, however. The pharmacologic elimination of *H. pylori*

**TABLE 41.1. Hereditary Syndromes in Gastric Cancer.**

## Well-recognized association:

- Hereditary diffuse gastric cancer syndrome
- E-cadherin germ-line mutation syndrome
- Hereditary non-polyposis colon cancer (HNPCC)
- Li-Fraumeni syndrome (p53 mutations)

## Possible, weak association:

- Familial adenomatous polyposis (FAP) syndrome

along with favorable dietary intervention has led to documented regression of atrophic gastritis and intestinal metaplasia.<sup>34,59-65</sup> Unfortunately for the purpose of cancer prevention, however, a (somewhat underpowered) Chinese *H. pylori* elimination trial in Fujian Province has recently documented a significant decrease in gastric cancer incidence only in participants without preexisting intestinal metaplasia and no significant decrease when such metaplasia was already established.<sup>66</sup> Ongoing *Helicobacter* eradication trials include one in Venezuela,<sup>64</sup> and one in Japan, the Japanese Intervention Trial on *H. pylori*.<sup>67</sup>

### Molecular Biology

The genetics and molecular biology of gastric cancer continue to be elucidated. With each clue to understanding the biology of gastric neoplasia, both targeted prevention and targeted therapy seem more and more feasible.

Between 8% and 10% of gastric cancer cases appear to be associated with a hereditary component, and these cases provide significant clues.<sup>68</sup> Dominant inheritance patterns and familial clusters have certainly been documented.<sup>69-71</sup> Notably, Napoleon Bonaparte's family was afflicted by hereditary gastric cancer, and this (rather than arsenic poisoning) appears to have caused his death.<sup>72</sup>

Table 41.1 summarizes recognized hereditary conditions associated with gastric cancer.<sup>73</sup> Perry Guilford and colleagues were among the first to describe germline E-cadherin mutations in a Maori kindred afflicted with diffuse-type gastric cancer,<sup>52,74</sup> and such mutations have also been described in African-American and European kindreds.<sup>52,75</sup> Gastric cancer is one of the neoplasms associated with the hereditary nonpolyposis colon cancer (HNPCC) syndrome, and such HNPCC-associated cancers are almost exclusively of the intestinal type.<sup>43,76</sup> It is also overrepresented in those afflicted with germline p53 mutations, Li-Fraumeni syndrome.<sup>50,77</sup> Asian reports of association of gastric cancer with familial polyposis coli (FAP) syndrome<sup>78</sup> have not been reported

for other populations,<sup>79</sup> and the relationship remains controversial.

Table 41.2 summarizes genetic and molecular abnormalities frequently described in sporadic cases of gastric carcinoma. Immortalizing telomerase activity is commonly noted in advanced gastric cancers, but not in surrounding normal gastric mucosa,<sup>80</sup> and is associated with a poor prognosis.<sup>81</sup> Inactivation of the p53 gene and abnormal expression has been detected in more than 60% of gastric cancers.<sup>82</sup> In diffuse-type tumors, E-cadherin expression is reduced in as many as 92% of tumors, compared to adjacent normal tissue.<sup>83</sup> Reduced expression of alpha-catenin, which forms intracytoplasmic complexes with the cadherins, is noted in 56% of tumors.<sup>84</sup> Overexpression of the MET gene that encodes a tyrosine kinase receptor for hepatocyte growth factor (HGF) is seen in approximately half of gastric cancers and tends to be associated with poor prognosis.<sup>85-87</sup> Loss of trefoil peptide, the isomerization of which relates to repair of gut mucosa,<sup>88</sup> occurs in approximately half of gastric carcinomas, especially the intestinal type.<sup>89-92</sup> Proliferation of gastric cancer cell lines is decreased by this peptide.<sup>93</sup> Expression tends to be decreased in intestinal metaplasia.<sup>94</sup> This family of peptides appears to play a key role in the multistep progression to gastric cancer.<sup>95</sup> Epidermal growth factor (EGF) is detected in more than 50% of gastric cancers and epidermal growth factor receptor in approximately a third, and these have been associated with invasiveness and poor prognosis.<sup>96-99</sup> Subtypes c-erb-B1 and -B2 (HER-2/neu) have also been detected<sup>100</sup> in up to a third of cases, and the latter has similarly been associated with poor prognosis.<sup>100-102</sup> Similarly, fibroblast growth factor is expressed in 54% to 70% of gastric cancers.<sup>103,104</sup> Cyclin D is another protein variably overexpressed in gastric cancer, with incidence of overexpression approximately 20% to 30% in sporadic cases,<sup>105-108</sup> and possibly more in familial tumors.<sup>109</sup> COX-2 is not normally expressed in gastric mucosa but is in tumors,<sup>110,111</sup> precancerous lesions,<sup>112</sup> and inflammatory states (especially those induced by *H. pylori*).<sup>113,114</sup> In tumors, its presence seems to correlate with angiogenesis and invasiveness, and it tends to inhibit apoptosis.<sup>115-117</sup> For these reasons, and observational evidence of possible chemoprevention by aspirin,<sup>118-121</sup> COX-2 inhibitors have been proposed as chemopreventive agents in gastric cancer.<sup>122</sup>

Differences among molecular and genetic patterns for gastrointestinal cancers can also provide clues to etiology and therapy. Ras proto-oncogene mutations, which are frequent in colon cancer, are infrequent in gastric cancer.<sup>123</sup>

Paracrine-like interactions between gastric cancer and fibroblasts have also been reported, particularly those involv-

**TABLE 41.2. Frequent genetic and molecular abnormalities in sporadic gastric cancer.**

Telomerase expression	85% of advanced tumors, poor prognosis
E-cadherin	In 92%, downregulation or mutation
p53 mutations	More than 60% of tumors
Trefoil peptide, TFF-1 (sP2)	Loss in 50% of gastric tumors, and decrease in intestinal metaplasia
MET, <i>c-met</i>	Overexpression in approximately 50%, a marker for poor prognosis
Epidermal growth factor (EGF)	Expression in more than 50% of advanced cancers
Fibroblast growth factor	70% expression, especially undifferentiated tumors
Cyclooxygenase 2 (COX-2)	Expressed frequently in tumors and precancerous lesions, but not in normal mucosa

ing transforming growth factor-beta (TGF- $\beta$ ) and hepatocyte growth factor (HGF),<sup>80,124</sup> as well as other factors.<sup>125</sup> Such tissue interactions appear to impact on the proliferation of neoplastic and preneoplastic cells.

## Diagnosis

Data from a registry-based American College of Surgeons Patient Care Evaluation Study nicely documents the presenting symptoms of patients with gastric cancer: weight loss in 62%, abdominal or epigastric pain in 52%, nausea in 34%, anorexia or early satiety in 32%, frank dysphagia in 26%, and melena in 18%.<sup>126</sup> Specific signs of gastric cancer are generally associated with more-advanced disease; these include palpable epigastric mass, ascites, left supraclavicular adenopathy, and Blummer's shelf palpable on rectal examination.

In low-incidence countries, fecal occult blood testing, when positive, triggers endoscopic investigation of both upper and lower gastrointestinal (GI) tract; this can lead to a diagnosis of early disease. Patients in defined higher-risk groups (e.g., positive family history or previously documented intestinal metaplasia) are increasingly being screened by surveillance endoscopy, and this, too, leads to diagnosis of more-localized disease. Overall in the United States and most low-incidence regions, stage IB or less (see following for staging) disease is detected in fewer than 23% of cases.<sup>127</sup>

In high-incidence countries, such as Japan, mass screening with upper GI contrast studies and endoscopy have proven successful in shifting stage distribution to lower stages, with measurable improvement in overall survival rates (level of evidence, II-1).<sup>128-133</sup> Pepsinogen I/II ratio of less than 2.0 (a marker of loss of oxyntic mucosa and the extent of intestinal metaplasia) has also been used as a mass screening tool.<sup>134</sup> In Japan, where mass screening has been established as national policy, the percentage of early gastric cancer cases among screening program participants is a staggering 74%.<sup>135</sup> Unfortunately, such mass screening is far less feasible in the poorer, less-developed nations of the world where gastric cancer tends to occur more frequently.<sup>136</sup>

## Extent-of-Disease Evaluation

Most patients undergo upper endoscopy as part of their initial evaluation. Key information gleaned from this examination includes tumor location and extent of mucosal involvement, distance from the esophagogastric junction, and Borrmann type.

Endoscopic ultrasound examination (EUS), using a 7.5- to 12-MHz transducer at the end of an endoscope, offers a reliable means of preoperatively assessing the depth of tumor penetration of the wall and a fairly reliable means of assessing for gross lymph node enlargement.<sup>137-139</sup> Concordance of EUS and pathologic T stage in most series is 85% or better.<sup>137,140</sup> Endoscopic ultrasound examination appears more accurate than even helical computed tomography.<sup>137,141</sup>

CT scanning of the abdomen and chest should be performed in most cases. It is very helpful in detecting distant metastatic disease, extraregional adenopathy, and signs of locally-advanced disease unlikely to be removed to negative margins with up-front surgery. Helical CT, particularly if enhanced by the triphasic water-filling scanning technique, appears to be more sensitive than conventional CT.<sup>142</sup>

Positron emission tomography (PET) with [<sup>18</sup>F]fluorodeoxyglucose (FDG) and PET-CT fusion scanning have enhanced detection of distant metastases in a variety of cancers. Unfortunately, gastric adenocarcinoma is not as suited for PET scanning as other tumors.<sup>143</sup> Primary tumor uptake is seen in only approximately 75% of cases, and the technique is less sensitive than CT for detecting nodal disease.<sup>144</sup> Neither mucus-containing tumors nor diffuse-type scirrhous tumors image well.<sup>145</sup> Furthermore, different regions of the normal stomach have different uptake of FDG,<sup>146</sup> thus complicating image interpretation. PET does appear to be somewhat helpful in detecting certain distant organ metastases, however.<sup>147,148</sup>

Laparoscopy and minilaparotomy represent invasive procedures, but can accurately detect serosal spread and small peritoneal implants, as well as extraregional nodal disease and small hepatic metastases.<sup>149-151</sup> In a recent large series, laparoscopy outperformed EUS and CT in detecting signs of unresectability and/or extraregional metastases.<sup>152</sup> It consistently outperforms CT.<sup>153</sup> In a recent series, laparoscopy proved more accurate than peritoneal fluid cytology in detecting peritoneal implants.<sup>154</sup> Lack of a prospective randomized trial showing resultant outcome differences makes inclusion of laparoscopy in pretreatment staging a level II-1 recommendation, however.<sup>155</sup>

## Staging and Prognosis

Since 1987, the American Joint Committee on Cancer (AJCC) and the Union Internationale Contra le Cancer (UICC) systems for the staging of cancer have been identical.<sup>156</sup> Fifth and sixth edition UICC/AJCC TNM staging for adenocarcinoma of the stomach is summarized in Table 41.3.<sup>157</sup> This TNM staging system differs from previous versions with respect to nodal classification. Formerly, nodal classification was based on anatomic location of lymph nodes. In the current fifth-sixth edition system, nodal staging is based on the number of pathologically involved nodes, thus (at least partially) addressing the thorny issue of stage migration related to extent of lymphadenectomy.

The staging of tumor depth, or T staging, for this site has not changed since 1988. The reader should be aware that T staging for this site differs from that of colorectal cancer. Invasion of the lamina propria or submucosa, but not the muscularis propria of the gastric wall, is deemed T1 disease. Invasion of the muscularis propria or a breach of the muscularis propria without a serosal breach is deemed T2 disease. A tumor may extend into the lesser omentum or the greater omentum adjoining the stomach and, provided the serosa (i.e., visceral peritoneum) is not breached, the tumor is deemed T2. A T3 tumor breaches the serosa, thus placing the patient at increased risk of peritoneal dissemination. Microscopic breach of the serosa can be difficult for the pathologist to detect, but prognostically, presence or absence of such penetration has great impact (e.g., one recent study from Hong Kong reports 5-year survival of 64% versus 10% based on this feature alone).<sup>158</sup> A T4 tumor invades adjacent structures such as spleen, transverse colon, liver, diaphragm, pancreas, abdominal wall, adrenal gland, kidney, small intestine, or retroperitoneum. Intramural extension to the duodenum or the esophagus is not considered invasion of an adjacent structure, and a tumor exhibiting such intramural extension is

**TABLE 41.3. UICC/AJCC Staging for Gastric Adenocarcinoma, 6th ed.**

<i>Primary tumor (T)</i>	
Tx	Primary tumor cannot be assessed
T0	No evidence of primary tumor
Tis	Carcinoma in situ: intraepithelial tumor without invasion of the lamina propria
T1	Tumor invades lamina propria or submucosa
T2	Invades muscularis propria or subserosa <sup>a</sup>
T2a	Tumor invades mucularis propria
T2b	Tumor invades subserosa
T3	Tumor penetrates serosa (visceral peritoneum) without invasion of adjacent structures <sup>b,c</sup>
T4	Tumor invades adjacent structures <sup>b,c</sup>
<i>Regional lymph nodes (N)</i>	
NX	Regional lymph nodes cannot be assessed
N0	No regional node metastasis <sup>d</sup>
N1	Metastasis in 1 to 6 regional lymph nodes
N2	Metastasis in 7 to 15 regional lymph nodes
N3	Metastasis in more than 15 regional lymph nodes
<i>Distant metastasis (M)</i>	
Mx	Distant metastasis cannot be assessed
M0	No distant metastasis
M1	Distant metastasis

<sup>a</sup>A tumor may penetrate the muscularis propria with extension into the gastroduodenal or gastrophrenic ligaments, or into the greater or lesser omentum, without perforation of the visceral peritoneum covering these structures. In this case, the tumor is classified T2. If there is perforation of the visceral peritoneum covering the gastric ligaments or the omentum, the tumor should be classified T3.

<sup>b</sup>The adjacent structures of the stomach include the spleen, transverse colon, liver, diaphragm, pancreas, abdominal wall, adrenal gland, kidney, small intestine, and retroperitoneum.

<sup>c</sup>Intramural extension to the duodenum or esophagus is classified by the depth of the greatest invasion in any of these sites, including the stomach.

<sup>d</sup>A designation of pN0 should be used if all examined lymph nodes are negative, regardless of the total number removed and examined.

**Stage Grouping**

0	TisN0M0
IA	T1N0M0
IB	T1N1M0
	T2a/bN0M0
II	T1N2M0
	T2a/bN1M0
	T3N0M0
IIIA	T2a/bN2M0
	T3N1M0
	T4N0M0
IIIB	T3N2M0
IV	T4N1-3M0
	T1-3N3M0
	Any T/Any N/M1

Source: Used with the permission of the American Joint Committee on Cancer (AJCC), Chicago, Illinois. The original source for this material is the *AJCC Cancer Staging Manual*, sixth edition (2002), published by Springer-Verlag New York, www.springer-ny.com.

staged based on the depth of greatest invasion, as described above.<sup>157</sup>

Nodal staging in the fifth and sixth edition UICC/AJCC system is by number of involved nodes. Absence of nodal metastasis is considered N0 disease. Nodal metastasis in 1 to 6 nodes is considered N1 disease and metastasis in 7 to 15

nodes is considered N2 disease. Metastasis to more than 15 lymph nodes is considered N3 disease, and most regard this extent of nodal disease as incompatible with survival following surgery treatment alone; hence, any N3 case is classified as stage IV.

Nodal data for prognostic estimates in large databases encompass hematoxylin and eosin (H&E) staining of nodes. Methods of nodal analysis such as immunohistochemistry or polymerase chain reaction analysis enhance sensitivity to a degree far beyond H&E analysis. Prognostic implications for nodes positive only by such methods are likely different, and to a degree that remains controversial.

Distant metastasis is scored as M1 disease and all such cases are deemed stage IV. Common sites of M1 disease include the peritoneal cavity, extraregional lymph nodes (e.g., paraaortic, retropancreatic, portal, retroperitoneal, and mesenteric lymph nodes), liver, ovaries, and, less commonly, lung and bone.<sup>157</sup>

The TNM staging matrix for stomach cancer is summarized in Table 41.3. If one creates a 2 × 2 table with T stages representing rows and N stages representing columns, stage categories generally map to the diagonals (i.e., if the sum of T and N is 1, stage IA; if the sum is 2, then stage IB; if the sum is 3, then stage II; if the sum is 4, then stage IIIA). Stage IIIB is reserved for stage T3N2M0 tumors. All cases with N3 disease, and all cases with a sum of T and N greater than 5, are considered stage IV.

Five-year and 10-year relative survival rates for U.S. cases treated by gastrectomy and pathologically staged according to the fifth–sixth edition UICC/AJCC system are depicted in Table 41.4.<sup>127</sup> Comparison of these rates suggests that 10-year relative survival (versus 5-year relative survival) should probably be considered as the preferred outcome standard for this cancer; in modern series, survival curves tend to plateau not at 5 years, but rather between 7 and 8 years.<sup>127</sup>

Clinicians in Japan and elsewhere often use an alternate staging system derived from a set of “General Rules for Gastric Cancer Study,” first published in 1963 and revised many times since.<sup>159</sup> A complete version of the 12th edition of this staging system, usually referred to as the “General Rules,” has been published in English, complete with color tables and diagrams.<sup>159,160</sup> The T stages in this system are similar to those in the UICC/AJCC system, but it is otherwise different. Nodal staging differs considerably, with node-level definitions ranging from (regional) N1 and N2 nodal levels to (generally considered extraregional) N3 and N4 levels. The specific definitions for such levels vary according to location of tumor within the stomach (e.g., proximal third, middle third, distal third). The system includes macroscopic

**TABLE 41.4. TNM staging and relative survival for U.S. cases treated by gastrectomy, 1985–1996 (n = 50, 169).**

6th edition UICC/AJCC stage	Five-year relative survival	Ten-year relative survival
IA	78%	65%
IB	58%	42%
II	34%	26%
IIIA	20%	14%
IIIB	8%	3%
IV	7%	5%

Source: Data from Hundahl et al.<sup>127</sup>



description of the tumor (e.g., early gastric carcinoma type or, if more advanced, Borrmann type), but such description does not directly impact on final stage assignment. Peritoneal metastases are described separately (e.g., P0–P3), as are liver metastases (e.g., H0–H3). Other sites are described conventionally (i.e., M0, M1). In the overall “General Rules” staging matrix, limited peritoneal or hepatic disease is lumped in stage IVA, and other distant metastatic disease is classified as stage IVB. In this Japanese system, nodal disease that one might term extraregional in the UICC/AJCC classification (e.g., General Rules N3 disease), is incorporated into stage IIIA or IIIB if the depth of invasion is T1 or T2. Fortunately, it is fairly easy to translate from the General Rules staging to UICC/AJCC staging, provided accurate node counts are also available.<sup>159</sup>

The Japanese General Rules system is of interest primarily because the extent of surgical lymphadenectomy in stomach cancer has been historically defined according to this system’s lymph node classification. Before the mid-1990s, the Japanese described as an “R-level” the extent of lymphadenectomy according to the highest echelon of lymph node stations completely dissected by the surgeon. To avoid confusion with the UICC R-factor, which described completeness of resection, extent of lymphadenectomy was described as a “D-factor” after the 12th edition of the General Rules.<sup>159,160</sup> In reviewing earlier literature in gastric cancer, one should be aware of the dual use of “R” terminology. Also, one should remember that the D-level description for level of lymphadenectomy is based on the Japanese nodal classification system (e.g., a lymphadenectomy is classified as D4 if all Japanese General Rules N1–N4 nodes are surgically removed, D3 if all N1–N3 but not all N4 nodes are cleared, etc.).<sup>159,160</sup>

In the current AJCC/UICC staging system, the choice of numerical thresholds for nodal categories represents a point of ongoing controversy. A number of investigators have observed progressive decrease in survival with increasing number of involved nodes,<sup>161–168</sup> with an apparent dropoff in survival when more than 3 nodes are involved.<sup>162–167,169</sup> Another drop-off when more than 6 nodes are involved has been reported.<sup>163,165,167,168,170,171</sup> Involvement beyond 15 or 16 nodes has been observed to be largely incompatible with long-term survival.<sup>161,169,171</sup> UICC/AJCC cutoffs are based on these observations, but it must be recognized that differences in the pathologic analysis of surgical specimens and differences in the extent of surgical lymphadenectomy can alter thresholds. A National Cancer Data Base (NCDB) report of 50,169 cases, all treated by gastrectomy, from 1985 through 1995, has documented that only 18% of U.S. gastric cancer cases have more than 15 nodes analyzed by the pathologist,<sup>127</sup> as recommended by the AJCC for accurate nodal staging.<sup>157</sup> The study further documented that stage migration related to nodal analysis persists in the United States despite the move to the fifth edition AJCC staging system based on number of nodes positive. Inadequate nodal analysis generated observed survival differences within assigned stage levels of up to 20%, and this was clearly related to the number of nodes analyzed. Nodal analysis beyond 15 nodes failed to generate any measurable enhancement in stage-stratified survival rates. Overall, 5-year relative survival was 28% and 10-year relative survival was 20%. Of the 10-year survivors in this series, 67% were node negative and 98% had 8 or fewer nodes involved.<sup>127</sup> Despite documented variation in nodal sampling and analysis, how-

ever, assigning nodal stage categories based on the number of involved lymph nodes does appear to generate better prognostic estimates compared to previous versions of the UICC/AJCC system<sup>172–174</sup> and the Japanese General Rules.<sup>173</sup>

Recently, Kattan and colleagues at Memorial Sloan-Kettering Cancer Center in the United States have published a prognostic nomogram based on multivariate analysis of 1,039 completely resected cases that somewhat corrects for inadequate nodal analysis in gastric cancer cases. Higher relapse risk is assigned when number of nodes analyzed is suboptimal.<sup>175</sup> This potentially useful prognostic tool awaits validation in a separate cohort.

Residual disease after surgical treatment is not included in the UICC/AJCC TNM stage grouping matrix. It nonetheless represents a powerful, significant, independent prognostic factor.<sup>176</sup> The UICC and AJCC code residual disease as R0 for none, R1 for microscopic residual, and R2 for macroscopic residual tumor.<sup>157</sup> The completeness of resection R-factor should be specifically assigned and recorded for all patients undergoing surgical treatment.

## Surgical Treatment

### Historical Overview

In the United States, increasingly radical surgical approaches for gastric cancer during the 1940s and 1950s<sup>177–180</sup> fell into disfavor in the late 1960s and 1970s with recognition of the sometimes considerable mortality such procedures entail, at least when performed on U.S. or European patients, given the level of patient selection and the level of postoperative care possible in that era.<sup>181</sup>

Encouraged by generally lower surgical mortality rates and favorable 5-year survival rates, Japanese surgeons, led principally by Kajitani and colleagues, adopted a related, but distinct, approach: negative-margin gastrectomy (with initial gross margins guided by the Borrmann type of the tumor: 2 cm for exophytic nodular tumors and 5+ cm for ulcerated infiltrating tumors or linitis plastica) combined with aggressive removal of regional/extraregional lymph nodes, omentum, and en bloc removal of the peritoneum lining of the floor of the omental bursa along with the pancreatic capsule and associated fatty nodal tissue (i.e., omentobursectomy). Also, depending on tumor location, resection of contiguous organs such as tail of pancreas and spleen were advocated in an effort to better clear lymph node stations along the splenic artery and the splenic hilum.<sup>182–185</sup> Reports from large cancer hospitals in Japan emphasized increasingly favorable stage-stratified results with such techniques, multiplied by screening-driven trends to earlier-stage diagnosis and improvement in overall survival.<sup>186–189</sup>

Genuinely increased overall survival as a result of early diagnosis in Japan has been generally accepted as valid.<sup>190–193</sup> However, claims by Japanese surgeons that more-radical surgical treatment was simultaneously generating better stage-for-stage results<sup>189,194–198</sup> failed to uniformly win international acceptance, given the previous observation of high perioperative mortality accompanying U.S.-style radical surgery.<sup>181</sup> By the late 1980s, however, remarkably low 30-day postoperative mortality rates reported from major Japanese institutions (e.g., 0.6% for expert institutions such as the National Cancer

TABLE 41.5. Prospective, randomized surgical trials.

<i>Lymphadenectomy trials</i>	<i>Inclusion criteria</i>	<i>N</i>	<i>Mortality/survival</i>	<i>Mortality/survival</i>	<i>P value (survival)</i>	<i>General comments</i>
			<b>D1</b>	<b>D2</b>		
Cape Town <sup>209,210</sup>	T1–3; N0–1; M0, age <75	43	0%/78% (3-year survival)	0%/76% (3-year survival)	n.s.	Solid design. Early closure due to poor accrual & inadequate power to detect.
British MRC <sup>216–218</sup>	Stage I–III, age >20	400	6%/35% (5-year survival)	13%/33% (5-year survival)	n.s.	Unique definition of “D1” and “D2”. Skimpy quality control.
Dutch <sup>219–220,222</sup>	Stage I–II, age <85	711	4%/45% (5-year survival)	10%/47% (5-year survival)	n.s.	Solid design. Despite superb quality control efforts, substantial protocol noncompliance. Trial question confounded by adverse effect of pancreaticosplenectomy.
			<b>D2</b>	<b>D4</b>		
Japanese D2 vs. D4 Trial <sup>226</sup>	Deep T2–T4		0.8%/–	0.8%/–	ongoing	Ongoing trial. Immature with respect to survival.
			<b>Subtotal</b>	<b>Total</b>		
French <sup>211</sup>	Antral tumor, M0		3%/48% (5-year survival)	1%/48% (5-year survival)	n.s.	Pioneering trial. Straightforward design.
Italian <sup>213,214</sup>	>6 cm proximal margin possible all, but not mandated M0		1%/65% (5-year survival)	2%/62% (5-year survival)	n.s.	D2 recommended all, but not mandated. Straightforward design.
			<b>Subtotal + D1</b>	<b>Total + D3</b>		
Hong Kong <sup>215</sup>	Antral >6 cm margin, M0, age <75		0%/1,511 median survival	3%/922 days median survival	0.04 days 0.07	Dual <i>P</i> values reported. Transfusion issue.

Center Hospital in Tokyo)<sup>194</sup> stimulated renewed interest in Japanese surgical methods. The much higher proportion of low-stage (early gastric cancer) patients in Japanese series, combined with marked differences between the Japanese staging system (see earlier) and the UICC/AJCC staging system, confounded direct international comparison of survival rates. The UICC and AJCC successfully standardized staging worldwide in 1987,<sup>199,200</sup> thus facilitating stage-stratified comparisons between Japanese and non-Japanese gastric cancer cohorts. Such comparisons revealed substantial stage-stratified survival differences,<sup>126,201</sup> prompting some to question whether gastric cancer in Japan was a “different disease” from that seen in Western industrial countries.<sup>202</sup> Several retrospective analyses from Japan and elsewhere suggested that Japanese-style surgical treatment generated higher stage-stratified survival.<sup>203–207</sup> With seemingly uniform UICC/AJCC staging, large apparent differences in stage-stratified survival rates were noted, with 5-year survival rates for each stage routinely much higher in the more radically treated Japanese cohorts.<sup>126,208</sup> Such observations set the stage for prospective, randomized clinical trials addressing the following two surgical questions: (1) What is the optimal extent of lymphadenectomy (i.e., Japanese D1 versus Japanese D2) in the treatment of gastric cancer? and (2) Is routine total gastrectomy with or without extended node dissection more effective than simple subtotal gastrectomy? Results of these trials are summarized next and in Table 41.5.

### Prospective, Randomized Trials of Surgical Treatment

The Cape Town South Africa Trial (1982–1986)<sup>209,210</sup> of D1 Versus D2 Lymphadenectomy (termed Japanese R1 versus

R2 at that time) was conducted between January 1982 and November 1986 by Dent and colleagues. Inclusion criteria included T1–T3, N0–N1 disease, no distant metastases, absence of significant comorbidity, and age less than 75 years. Patients from “remote areas” were excluded. For accurate staging, biopsies of celiac, common hepatic, hepatic nodes, and “any abnormal nodes” were taken for all patients. D2 (aka R2 dissection in the nomenclature of the time) was performed according to the Japanese methods described by Kajitani and Nakajima (i.e., removal of omentum, superior leaf of peritoneum on the transverse mesocolon, removal of the capsule of the pancreas, aka omentobursectomy, and celiac-based lymph node dissection).<sup>182,185</sup> For the gastric resection itself, gross proximal clearance of 5 cm was required in both arms, and reconstructive techniques were specified. Over the period of study, 608 cases were reportedly evaluated; 403 were deemed surgical candidates, but only 43 (7% overall and 11% at laparotomy) were deemed to meet all eligibility criteria. Following treatment and discharge, patients were followed by examination at 3-month intervals. No attempt was made to screen for recurrence.<sup>209,210</sup> No survival differences were noted. In-hospital mortality was zero for both groups. The trial did document increased operative time (*P* less than 0.005), increased blood transfusions (*P* less than 0.005), and longer hospital stay (*P* less than 0.05) for the D2 group. This single-institution trial was halted when single-institution accrual to adequate statistical power for the question was deemed unlikely.<sup>209,210</sup>

The French Subtotal Versus Total Gastrectomy Trial,<sup>211</sup> by the French Association for Surgical Research, was conducted between 1980 and 1985 to address the potential value of routine total gastrectomy versus the higher mortality and morbidity associated with this procedure, as documented by



McNeer and others.<sup>180,212</sup> Eligibility criteria included presence of an adenocarcinoma located in the distal half of the stomach, good organ function, and no evidence of nodal involvement higher than the gastroesophageal junction or in the splenopancreatic region. Cases of superficial carcinoma (in situ or early T1) were to be excluded, as were cases of obvious linitis plastica type extensive infiltration within the gastric wall. Extensive lymph node dissection was not mandated, but proximal ligation/resection of the left gastric artery was. A Billroth II gastrojejunostomy reconstruction was used for all subtotal gastrectomy cases, reconstruction for all total gastrectomy cases consisted of Roux-en-Y esophagojejunostomy, and 169 patients were randomized. Somewhat paradoxically, postoperative mortality was observed to be lower in the total gastrectomy group (1.3% versus 3.2%). Five-year survival rate for both groups was identical at 48%.<sup>211</sup>

The Italian Subtotal Versus Total Gastrectomy Trial<sup>213,214</sup> was conducted from April 1982 through December 1993. Six hundred eighteen patients with localized gastric adenocarcinoma of the antrum were randomized to subtotal gastrectomy versus total gastrectomy. A D2 lymphadenectomy and omentobursectomy was recommended for all patients but not mandated. Inclusion criteria included histologic confirmation of adenocarcinoma, age less than 75, absence of serious comorbid conditions, and no history of previous malignancy, gastric surgery, or chemotherapy. Additionally, during laparotomy, all patients were required to have a tumor-free proximal margin of 6 cm and absence of any extraregional nodes, hepatic metastases, peritoneal metastases, or unresectable infiltration of contiguous organs. Over this 1982–1993 period, 1,372 patients from 31 Italian institutions were evaluated and 648 randomized; after exclusions, 311 were left in the subtotal gastrectomy group and 296 in the total gastrectomy group.<sup>213,214</sup> With median 72-month follow-up, 5-year Kaplan–Meier survival was 65.3% for the subtotal gastrectomy group and 62.4% for the total gastrectomy group ( $P = \text{n.s.}$ ).<sup>213,214</sup>

The Hong Kong Trial of D1 Subtotal Versus D3 Total Gastrectomy<sup>215</sup> was conducted between October 1987 and December 1991 by Robertson and colleagues at the Prince of Wales Hospital in Hong Kong. The trial was open to patients undergoing laparotomy for grossly localized antral tumors that could be cleared to a 6-cm proximal margin with subtotal gastrectomy. Additional entry criteria included negative distal margin, absence of liver metastases, absence of peritoneal metastases, age less than 75 years, and absence of serious comorbid conditions. Neither intraoperative cytologic nor histologic analyses were performed. In the D3 group, distal pancreatectomy and splenectomy and D3 lymph node dissection were routinely performed, but without omentobursectomy. The R1 subtotal group underwent simple distal gastrectomy with a 6-cm proximal margin, high ligation of the right and left gastric arteries, and simple omentectomy, but no other node dissection. Over the study period, 55 cases were randomized, 25 in the D1 subtotal group and 30 in the D3 total group.<sup>215</sup> In this trial, survival was actually better for the more simply treated D1 subtotal group (median survival, 1511 versus 922 days;  $P$  less than 0.05). The D3 total group had longer operative time (260 versus 140 minutes;  $P$  less than 0.05), more transfusions ( $P$  less than 0.05), and much longer hospital stay (16 versus 8 days;  $P$  less than 0.05). No patient in the D1 subtotal group died postoperatively in hospital, in contrast to 1 patient in the D3 total group ( $P = \text{n.s.}$ ).<sup>215</sup>

The Medical Research Council (MRC) Trial of Modified “D1” Versus Modified “D2” Lymphadenectomy<sup>216–218</sup> was conducted in 1986 through 1995, by Cuschieri, Fielding, Craven, Joypaul, and colleagues of the Surgical Co-operative Group. In this trial, a D1 procedure was defined in a manner at variance with the definition used by the JRSGC. For this trial, a D1 lymph node dissection was one in which only those lymph nodes within 3 cm of the tumor were removed (consistent with pre-1997 TNM definitions of N1 nodes). The D2 procedure was defined as one in which TNM N2 nodes (i.e., “celiac, hepatoduodenal, retroduodenal, splenic, and retropancreatic nodes, depending on location of the tumor,” as well as perigastric nodes more than 3 cm from the tumor) were removed and the omental bursa resected (omentobursectomy). Distal pancreaticosplenectomy was performed almost exclusively in the D2 group, and splenectomy in both groups, but more frequently in the D2 group. Eligibility was assessed at staging laparotomy. Prelaparotomy exclusions included age less than 20 and those with serious comorbid disease. All patients were assessed, at laparotomy, for the presence of peritoneal implants, liver metastases, and extraregional/periaortic adenopathy, particularly in the area of the left renal vein. Those with disease in these sites were excluded. Intraoperative peritoneal cytology was not used. Eligible cases were deemed to have TNM stage I–III disease with negative margins of resection and a proximal margin of at least 2.5 cm free of gross disease. Of 737 cases registered, 337 were deemed ineligible at staging laparotomy because of advanced disease, leaving 400 cases for intraoperative randomization.<sup>216–218</sup> With median follow-up of 6.5 years, 5-year overall survival for the D1 group was 35% versus 33% for the D2 group ( $P = \text{n.s.}$ ). Recurrence-free survival and disease-specific survival did not differ significantly. Unfortunately, splenic resection, performed more frequently in the D2 group, and pancreatic resection, performed almost exclusively in the D2 group, seriously impacted survival and proved to be independent predictors of poor survival. Complications and mortality were higher in the D2 group, and pancreaticosplenectomy appeared to be a powerful influence. The adverse impact of pancreaticosplenectomy, particularly pancreatectomy, somewhat confounded this trial with respect to the lymphadenectomy question.<sup>216–218</sup>

The Dutch Trial of D1 Versus D2 Lymphadenectomy<sup>219,220</sup> was conducted between August 1989 and July 1993 by surgeons participating in the Dutch Gastric Cancer Group. Eligibility criteria included age less than 85 years, adequate physical condition with no serious comorbid diseases, no previous cancer, no previous gastric surgery, and histologically confirmed gastric adenocarcinoma without evidence of distant metastases. Patients in both groups underwent distal or total gastrectomy according to the location of the tumor, with subtotal gastrectomy allowed if a proximal tumor-free margin of 5 cm could be achieved. At the onset of the trial, surgeons from 80 centers and 8 expert consulting surgeons were extensively instructed concerning Japanese-type surgical treatment according to Japan Research Society for Gastric Cancer (JRSGC) definitions and guidelines.<sup>160,182,221</sup> Patients were randomized preoperatively to arrange for the intraoperative presence of an expert consultant surgeon for all D2 cases. A Japanese expert surgeon attended every case during the first 4 months of the trial. The D1 procedure involved removal of all JRSGC-defined N1 nodes, generally the

perigastric nodes at stations 1–6 along the greater and lesser curvatures of the stomach, along with removal of the lesser and greater omentum. The D2 procedure involved omentobursectomy (i.e., removal of greater and lesser omentum, the superior leaf of the transverse mesocolon and the capsule of the pancreas), frequent distal pancreatectomy and splenectomy (depending on tumor location), and removal of all JRS GC-defined N2 nodes at stations 7–12 (i.e., left gastric, celiac, common hepatic, proper hepatic, and splenic arteries and splenic hilar nodes). Reconstruction following completion of the D2 node dissection was left to the local institutional surgeon, as was the postoperative care of the patient<sup>219,220</sup>. Of the 1,078 cases randomized preoperatively, 82 (8%) were excluded for various reasons, most commonly, unavailability of a consultant reference surgeon (35 cases), poor physical condition, or lack of histologic confirmation of the diagnosis. Of the remaining 996 patients randomized and entered into the study, 285 had evidence of incurable/extraregional disease and were excluded; 711 deemed potentially curable underwent the randomly assigned treatment (i.e., D1 or D2 resection) with curative intent. The 380 cases in the D1 group and the 331 cases in the D2 group were well balanced with respect to age, gender, tumor location, and tumor depth. Eighty-nine percent of the cases in each group underwent apparent, pathologically confirmed, negative-margin resection. A slightly higher proportion of cases in the D2 group underwent total gastrectomy (38% versus 30% in the D1 group).<sup>219,220</sup>

Among randomized cases, morbidity (25% versus 43%;  $P$  less than 0.001) and in-hospital mortality (4% versus 10%;  $P = 0.004$ ) were higher for the D2 group. With a median follow-up of 72 months, 5-year survival was 45% for the D1 group and 47% for the D2 group ( $P = \text{n.s.}$ ). Pancreatic and splenic resection, performed mostly in the D2 group (and mandated for particular tumor subsites) were associated with significantly higher morbidity and mortality in this study. Restricting the analysis to patients who did not undergo pancreatic or splenic resection (a post hoc, selected analysis), survival was higher for the D2 group (59% for the D1 group versus 71% for the D2 group;  $P = 0.02$ ).<sup>222</sup> Overall, however, for those who indeed had a negative-margin resection deemed potentially curative, risk of relapse at 5 years was 43% for the D1 group versus 37% for the D2 group (difference between relapse rates was not significant). An 11-year follow-on report for this trial indicates that of the 89 cases with pathologic N2 disease, there were nine 10-year survivors, and 8 of the 9 were in the D2 group ( $P = 0.01$  for this post hoc analysis of the N2 subgroup).<sup>222</sup> Overall survival at the 11-year mark is 31% versus 35% for D1 and D2, respectively ( $P = 0.53$ ). Post hoc subset analysis notwithstanding, overall, this trial fails to support routine D2 lymphadenectomy.<sup>219,220</sup>

At the time, both the MRC trial and the Dutch Trial were initiated, pancreatocystectomy was still deemed a standard part of a Japanese-type operation for cancers involving the cardia. By the mid-1990s, Japanese recommendations with respect to pancreatocystectomy had shifted<sup>223–225</sup>; however, both trials were already well under way. Perhaps in response to MRC and Dutch Trial findings, pancreas-preserving D2 (or D2+) operations are now favored by the Japanese and others, unless resection of these organs is required to achieve negative margins.<sup>223–225</sup>

A multicenter Japanese Trial of D2 Versus D4 Lymphadenectomy,<sup>226</sup> initiated by Sasako, Sano, and colleagues,

dwells on the potential value of paraaortic lymph node dissection for deep T2 (i.e., serosal invasion suspected) and T3–T4 proximal tumors. In both Japan and Italy, microscopic disease in such nodes is not infrequent, and resection of such diseased nodes can generate approximately 15% 5-year survival.<sup>227–231</sup> This trial has now completed accrual of 523 eligible cases. Thirty-day operative mortality for both D2 and D4 groups in this trial is 0.8%.<sup>226</sup> The trial remains immature with respect to survival.<sup>226</sup>

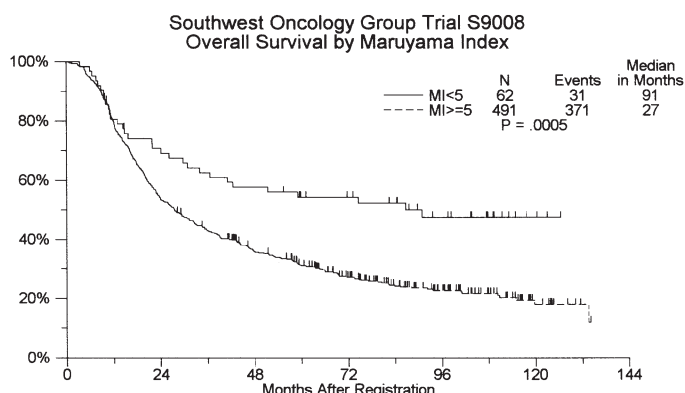
Summarizing results from all these surgical trials, neither routine D2 (or greater) lymphadenectomy with pancreatic-splenic resection nor routine total gastrectomy can be routinely recommended (level of evidence, I). Overall, the somewhat arbitrary D-level system for guiding lymphadenectomy has not proven helpful in increasing survival. However, the potential value of pancreas/spleen-preserving lymphadenectomy, particularly if performed in low-mortality centers (e.g., those in Japan and certain other expert centers) remains an open question.

### In-Hospital Mortality Rates Associated with Gastrectomy for Cancer

In both the MRC trial (6.5% versus 13%,  $P = 0.04$ )<sup>217</sup> and the Dutch Trial (4% versus 10%,  $P = 0.004$ ).<sup>219,232</sup> in-hospital mortality was significantly associated with pancreatic-splenic resection,<sup>217,232</sup> which, in turn, was far more frequent in the D2 group (mandated component of D2 for most nonantral tumors). Viewed critically, in-hospital mortality was also very high for the D1 groups. In the aforementioned Japanese multicenter D2 versus D4 trial, surgical mortality was only 0.8% for both groups.<sup>226</sup> Certainly, comorbid cardiovascular disease probably differs among international patient populations, but other factors such as surgical experience, technique, and variation in morbidity management can also play a role.<sup>233</sup> In U.S. studies, surgeon volume and hospital volume persistently impact on in-hospital mortality.<sup>234–236</sup> The mechanisms for the volume–mortality relationship have yet to be fully elucidated. Specialists, well-equipped and well-staffed operating rooms, and specialized services, including sophisticated ICU care, tend to be more available in larger hospitals.<sup>237,238</sup> Additionally, when surgeons have open access to various hospitals, high-volume surgeons might preferentially prefer to practice in such environments.<sup>237,238</sup> For a major procedure such as gastrectomy for cancer, there is evidence of both a learning curve<sup>239</sup> and value to volume. Referral to specialist centers has been proposed.<sup>240,241</sup>

### Maruyama Index of Unresected Disease and Computer-Guided Lymphadenectomy

In the late 1980s, Keiichi Maruyama and colleagues at the National Cancer Center Hospital in Tokyo created a computer program (known as the Maruyama Program) that searched a meticulously-maintained 3,843-patient database of gastric cancer cases treated by extensive lymphadenectomy, matching cases with similar characteristics to a given case. With seven demographic and clinical inputs (all identifiable preoperatively or intraoperatively), the program predicts the statistical likelihood of nodal disease for each of 16 (JRS GC-defined) nodal stations around the stomach (note that current JRS GC General Rules identify 33 nodal stations, substations,



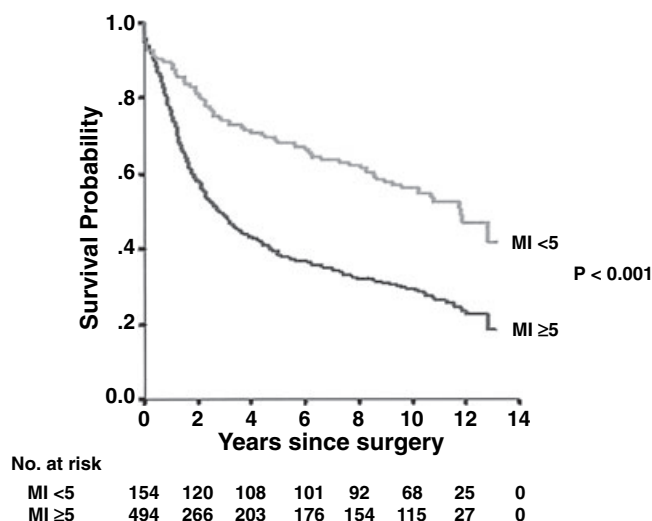
**FIGURE 41.6.** Impact of a surgical factor, Maruyama Index of Unresected Disease (MI), on overall survival for cases enrolled in SWOG 9008/INT 0116, a large U.S. adjuvant trial. (Updated data courtesy of Southwest Oncology Group.<sup>246</sup>)

and optional sites). Maruyama Program predictions have been assessed in Japanese, German, and Italian populations and found to be highly accurate.<sup>242-244</sup> The tool is designed to be used by surgeons preoperatively or intraoperatively as a convenient means of rationally planning the optimal extent of lymphadenectomy for a given patient. Since the late 1980s, the program has been used in exactly this way by surgeons at the National Cancer Institute Hospital in Tokyo and by many gastric cancer surgeons around the world. In an effort to expand use of this computerized tool, a CD-ROM with expanded case volume has been prepared.<sup>245</sup>

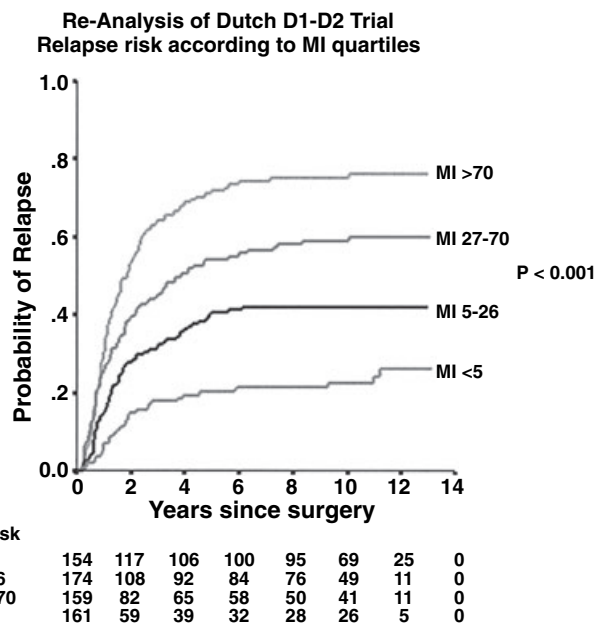
In a prospectively planned surgical analysis of a large multicenter U.S. trial of adjuvant postoperative chemoradiation in gastric cancer (SWOG 9008/Intergroup 0116; see following), the extent of surgical treatment was specifically assessed and prospectively coded through both detailed reporting forms and review of records (e.g., operative reports). The prospectively planned surgical analysis of survival in Intergroup 0116 made use of a novel means of quantifying the ade-

quacy of lymphadenectomy relative to likely extent of nodal disease: the "Maruyama Index of Unresected Disease" (MI). The Maruyama Index of Unresected Disease was defined (by the author, S.H.) as the sum of Maruyama Program predictions for those Japanese-defined regional node stations (stations 1-12) left in situ by the surgeon.<sup>246</sup> Based on the Intergroup trial's entry criteria, and the definition of MI, every case registered to INT-0116 could have had an MI of 0; this variable was under the surgeon's control. Before any survival analysis in this trial, it was speculated that patients with MI less than 5 would have measurably superior survival. As shown in Figure 41.6, this indeed proved to be the case, with median overall survival for the MI less than 5 subgroup 91 months versus 27 months ( $P = 0.005$ ). By multivariate analysis, adjusting for treatment, T stage, and number of nodes positive, MI proved an independent predictor of survival ( $P = 0.0049$ ). Data for disease-free survival are similar.<sup>246,247</sup> The overall median Maruyama Index of Unresected Disease in this chemoradiation trial was 70 (range, 0-429), suggesting undertreatment. An effect for "dose of surgery," as measured by MI, was also evident: median survival was 20 months for the highest MI quartile and 46 months for the lowest MI quartile (treatment-adjusted  $P = 0.002$ ).<sup>246</sup> In summary, by univariate analysis and by multivariate analysis, MI proved to be a strong and significant predictor of prognosis.<sup>246,248</sup>

To further assess of the utility of MI as a prognostic tool, the Dutch Trial has recently been reanalyzed. Blinded to survival, and eliminating cases with incomplete information, 648 of the 711 patients treated with curative intent had MI assigned. Median MI was 26 and varied according to UICC stage, nodal stratum, T stage, D level, and tumor involvement of overlapping sites, in that order. In contrast to D level, MI less than 5 proved an independent predictor of both overall [ $P = 0.016$ , hazard ratio (HR) = 1.45, 95% confidence interval (CI) = 1.07-1.95] and relapse risk ( $P = 0.010$ , HR = 1.72, 95% CI = 1.14-2.60).<sup>249</sup> As shown in Figures 41.7 and 41.8, a dose-response effect was also evident.<sup>249</sup> This blinded



**FIGURE 41.7.** Reanalysis of the Dutch D1-D2 Trial. Maruyama Index of Unresected Disease (MI) is a major independent prognostic factor. Low MI is associated with superior survival. (From Peeters et al.,<sup>249</sup> by permission of *World Journal of Surgery*.)



**FIGURE 41.8.** Dose-response effect for MI with respect to relapse in the Dutch D1-D2 Trial (data for survival similar, not shown). (From Peeters et al.,<sup>249</sup> by permission of *World Journal of Surgery*.)



reanalysis further supports the utility of the Maruyama computer program in customizing the extent of lymphadenectomy in individual gastric cancer cases according to the predicted extent of nodal disease. "Low Maruyama Index" surgery, which can easily be accomplished by using the Maruyama Program to prospectively plan lymphadenectomy for a given patient, appears to enhance survival (level II-1 evidence). This conclusion has yet to be validated in a prospective, randomized trial.

### Endoscopic Mucosal Resection of Selected T1 Cancers

In countries such as Japan, where the incidence of early gastric cancer (i.e., T1 tumor) is high, endoscopic mucosal resection (EMR) has emerged as a reasonable option for selected cases.<sup>250-255</sup> In the traditional technique of endoscopic mucosal resection, submucosal injection of saline floats the small area of tumor-bearing mucosa off the underlying muscularis propria and the lesion is resected with a special cautery snare with hooks to preserve specimen orientation for margin analysis. The procedure can be technically challenging, but innovations such as use of incision endo-forceps,<sup>256</sup> aspiration mucosectomy,<sup>257</sup> use of a stabilizing distal magnetic anchor,<sup>258</sup> or use of the double endoscope resection technique<sup>259</sup> can facilitate its proper execution. Percutaneous traction assist techniques using small percutaneous ports and instrumentation can also facilitate the procedure,<sup>260</sup> but percutaneous violation of the gastric lumen in such cases can risk unnecessary intraabdominal or port site tumor implantation. For this reason, laparoscopic resection for superficial T1 tumors suitable for EMR has been viewed with caution.<sup>255</sup>

Selection of cases suitable for EMR hinges on the absence of disease in the regional lymphatics. A combined series of 5,265 surgically treated T1 cases from the National Cancer Center Hospital and the Cancer Institute Hospital in Tokyo offers unsurpassed level II guidance.<sup>261</sup> For *intramucosal tumors*, none of 1,230 well-differentiated cancers of less than 30mm diameter, regardless of ulceration findings, were associated with metastases (95% CI, 0%–0.3%). Regardless of tumor size, none of 929 cancers without ulceration were associated with nodal metastases (95% CI, 0%–0.4%). For *submucosal cancers*, there was a significant correlation between tumor size larger than 30mm and lymphatic-vascular involvement with an increased risk of nodal involvement. None of the 145 well-differentiated adenocarcinomas of less than 30mm diameter without lymphatic or venous permeation were associated with nodal involvement, provided that the lesion had invaded less than 500µm into the submucosa (95% CI, 0%–2.5%).<sup>261</sup>

In an 11-year, 445 case series by Ono and colleagues from the National Cancer Center Hospital in Tokyo, there were no gastric cancer related deaths during a median follow up period of 38 months (3–120 months).<sup>250</sup> Although bleeding and perforation occurred in 5%, there were no treatment-related deaths.<sup>250</sup> For selected superficial T1 cancers, endoscopic mucosal resection performed by experienced personnel can generate superb results and can certainly be recommended, especially because local recurrences can be addressed with salvage gastrectomy (level II-2 evidence).

## Adjuvant Treatments

### Radiation and Chemoradiation

For locally advanced tumors deemed unresectable to negative margins, radiation and concomitant chemoradiation appear to make long-term disease-free survival possible for a small, but significant, subset of patients.<sup>262</sup> In a Mayo Clinic series published in 1969, Moertel and colleagues documented rare long-term survivals with regional chemoradiation.<sup>263</sup> In a follow-up prospective, randomized trial of radiation alone ( $n = 23$ ) versus concomitant bolus 5-fluorouracil (5-FU) plus radiation ( $n = 25$ ), mean survival was 13 months versus 6 months, favoring combined therapy ( $P$  less than 0.05) and 5-year survival was 12% versus 0%.<sup>264</sup> In a follow-up study, the Gastrointestinal Tumor Study Group randomized 90 eligible cases to receive either combination chemotherapy alone or concomitant chemoradiation with further, follow-on chemotherapy. Early nutritional and myelosuppressive complications rendered initial survival of the chemoradiation arm inferior, but with minimum 5-year follow-up, survival was significantly higher for the chemoradiation arm, with 16% alive disease free compared to 7% among those treated with chemotherapy alone ( $P$  less than 0.05).<sup>265</sup>

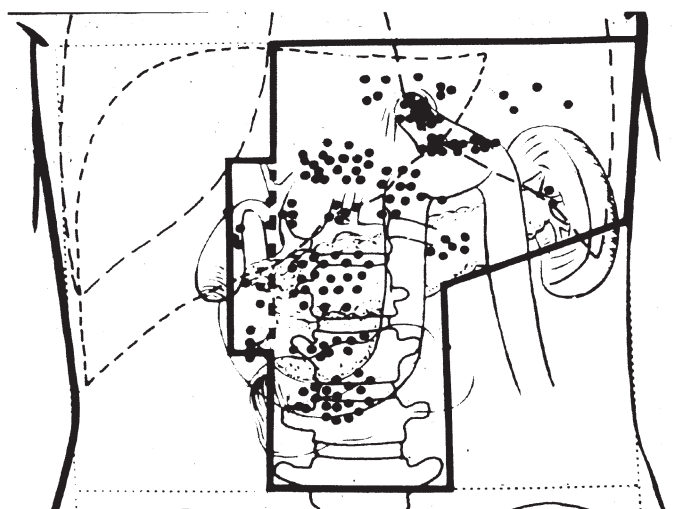
For cases treated surgically, historical pattern-of-failure data from clinical, operative second look, and autopsy sources document that approximately 60% of node-positive and/or transserosal cancers (T3 or more) recur in regional nodes, tumor bed, or anastomosis, with 20% of tumors recurring only locoregionally (Table 41.6).<sup>262,266-270</sup> Such data compellingly invited application of locoregional radiation or chemoradiation as an adjuvant to surgical treatment. Figure 41.9 depicts a early proposal by Gunderson and Sosin for a radiation treatment field encompassing frequent locoregional areas of failure, based on Wangenstein's University of Minnesota reoperative series.<sup>271</sup>

Between 1991 and 1998, the Southwest Oncology Group and the Gastric Intergroup conducted SWOG 9008/INT 0116, a two-armed prospective randomized trial of postoperative adjuvant chemoradiation versus surgery alone in patients with completely resected adenocarcinoma of the stomach and esophagogastric junction. Eligibility criteria for this trial specified complete negative-margin resection, registration 20–41 days postoperatively, adequate organ function, good performance status (i.e., Zubrod 1 or 2), postoperative caloric intake of more than 1,500 kcal per day, and fourth edition TNM stage IB or higher, distant-metastasis-negative, disease.<sup>272</sup> Of 603 cases accrued to the study, 46 (8%) were ineligible, leaving

**TABLE 41.6. Patterns of failure after "curative" resection of gastric cancer.**

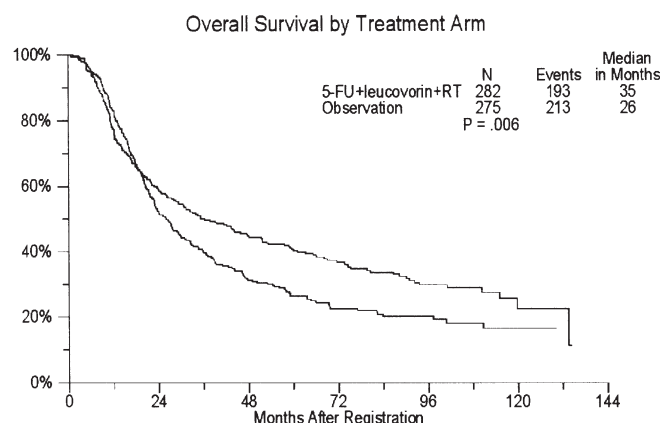
<i>Incidence in total patient group (%)</i>			
<i>Pattern of Failure</i>	<i>Clinical</i>	<i>Reoperation</i>	<i>Autopsy</i>
A. Locoregional	38	67	80–93
B. Peritoneal seeding	23	41	30–50
—Localized		–19	
—Diffuse		–22	
C. Distant metastases	52	22	49

Modified from Smalley et al.,<sup>262</sup> by permission of *International Journal of Radiation Biology Oncology Physics*.



**FIGURE 41.9.** Early proposal by Gunderson and Sosin for a radiation treatment field encompassing frequent locoregional areas of failure, based on Wangenstein's University of Minnesota reoperative series. (From Gunderson and Sosin,<sup>267</sup> by permission of *International Journal of Radiation Oncology Biology Physics*.)

556 cases; 20% of eligible cases registered had disease of the cardia/gastroesophageal junction, and advanced-stage cases were overrepresented. Eighty-five percent of cases were node positive. Using AJCC/UICC fifth edition criteria, fully 69% of the cases had AJCC IIIA or IIIB disease (46% and 23%, respectively) and only 8% had stage IB disease.<sup>272</sup> Of the cases in this trial, 54% underwent D0 (i.e., less than D1 lymphadenectomy), a source of subsequent criticism. The treatment consisted of one cycle of 5-FU (425 mg/m<sup>2</sup>) and leucovorin (LV, 20 mg/m<sup>2</sup>) in a daily  $\times$  5 regimen followed by 4,500 cGy (180 cGy/day, M–F) given with 5-FU/LV (400 mg/m<sup>2</sup> and 20 mg/m<sup>2</sup>) on days 1 through 4 and on the last 3 days of radiation. On completion of the radiation, two additional cycles of daily  $\times$  5% FU/LV were given at the original dose levels at monthly intervals.<sup>272</sup> Results for this trial were recently updated with more than 6 years of median follow-up (Figure 41.10).<sup>273</sup> Overall survival was 35 months median for chemoradiation versus 26 months for surgery alone [ $P = 0.006$ ;



**FIGURE 41.10.** Updated survival with more than 6 years median follow-up for INT-0116, a trial of postoperative adjuvant chemoradiation (upper curve) versus postoperative observation (see text). (Updated data courtesy of Southwest Oncology Group.<sup>272,273</sup>)

hazard ratio, 1.31 [1.08–1.61]). Disease-free survival was also significantly different at 30 months median for chemoradiation and 19 months for surgery alone [ $P$  less than 0.001; hazard ratio, 1.52 (1.75–1.85)].<sup>273</sup>

Exploratory subgroup analyses for INT-0116 were recently performed for six variables: gender, T stage, N stage, gastric subsite, D level of dissection, and diffuse versus intestinal histology. Positive treatment effects were seen in all subsets. A possible treatment interaction was seen, with diffuse-type histology cases doing poorly with therapy, but after adjusting for multiple testing, this result was not significant.<sup>273</sup>

The likely burden of unresected locoregional disease in this trial is problematic.<sup>274</sup> Less than D1 lymphadenectomy, considered suboptimal in the opinion of most experts, was performed in 54% of the cases.<sup>246,272</sup> As noted in the previous section, cases with Maruyama Index of Unresected Disease (MI) less than 5 enjoyed significantly greater survival (median overall survival for the MI less than 5 subgroup, 91 months versus 27 months;  $P = 0.005$ ), and this was an independent predictor of survival.<sup>246</sup> By D level, median survival was 27 months for D0 lymphadenectomy and 48 months for D2 lymphadenectomy, but only 10% of cases registered to this trial underwent D2, and this difference was not significant.<sup>246</sup> Surgical undertreatment may have played a role in making this a positive trial.<sup>274</sup>

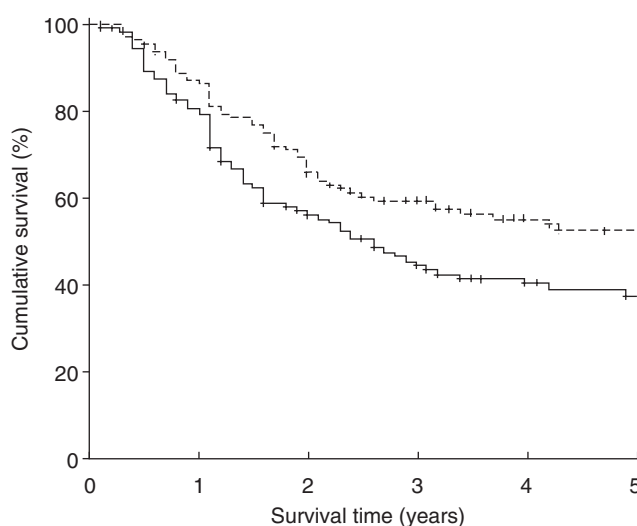
On the basis of INT 0116, adjuvant chemoradiation has been recommended in the United States for all patients with stage IB or greater, M0 disease (i.e., locoregional disease), *provided* they meet criteria for adequate caloric intake (more than 1,500 cal/day), good organ function, and good performance status.<sup>272</sup> Do all patient subgroups really benefit? The power to detect differing treatment effect in various subgroups in this trial (especially the stage IB subset) is low. Statistical tests of treatment interaction with pathology and surgical variables have been negative, however.<sup>272</sup> A cautionary note concerning the lower-risk, stage IB subgroup (i.e., patients with T2N0 or T1N1 disease) has been voiced.<sup>274</sup>

On the basis of this study, a new U.S. Intergroup trial, examining postoperative etoposide, cisplatin, and 5-FU (ECF) chemotherapy before and after radiation with continuous infusion 5-FU versus adjuvant treatment according to the INT-0116 protocol, is now under way, as well as other, similar trials in Europe.

### Early Postoperative Intraperitoneal Chemotherapy

Japanese investigators have advocated intraperitoneal and intralymphatic installation of mitomycin C bound to micro-carbon particles for some time.<sup>275</sup> This treatment has been tested in an Austrian prospective randomized trial with negative results.<sup>276</sup> Another Austrian prospective randomized trial of perioperative cisplatin has also been reported as negative.<sup>277</sup> A Japanese trial of intraperitoneal OK-432 in addition to systemic therapy has also been negative.<sup>278</sup> Phase II investigations of intraperitoneal therapy have also been conducted in the United States and elsewhere,<sup>279,280</sup> with some investigators enthusiastic<sup>281</sup> and some advising caution because of the associated morbidity.<sup>282</sup>

One positive prospective randomized clinical trial of perioperative intraperitoneal has been reported.<sup>283</sup> Between 1990 and 1995, 248 Korean patients with biopsy-proven gastric



**FIGURE 41.11.** Kaplan-Meier overall survival for group treated with early postoperative intraperitoneal chemotherapy (mitomycin C on postoperative day 1 and 5-fluorouracil (5-FU) daily on postoperative days 2–5; upper curve) versus controls receiving surgery alone (lower curve). With mean follow-up of 36 months, survival difference is significant ( $P = 0.0278$ ). (From Yu et al.,<sup>283</sup> by permission of *World Journal of Surgery*.)

cancer without intraoperatively detected distant organ metastases were randomized intraoperatively following complete resection and minimum D2 lymphadenectomy to receive postoperative intraperitoneal mitomycin C and 5-FU versus surgery alone (Figure 41.11). Stage I cases and those more than 70 years of age were excluded. Postoperative adjuvant treatment, delivered intraperitoneally through a Tenckhoff catheter, consisted of 10mg/m<sup>2</sup> mitomycin C delivered at body temperature in 1 L dialysis solution on the first postoperative day, followed by 700mg/m<sup>2</sup> 5-FU plus 50mEq sodium bicarbonate in 1 L dialysis solution daily on days 2 through 5. No further antitumor treatment was administered during the disease-free interval. In-hospital mortality was 6.4% in the treated group versus 1.6% in the surgery-only group ( $P = \text{n.s.}$ ). Among morbidities, intraabdominal bleeding (10% versus 1%;  $P = 0.002$ ) and intraabdominal abscess/peritonitis (14% versus 4%;  $P = 0.008$ ) were more frequent among treated cases. Follow-up consisted of regular physical examinations, but CT scans, paracentesis, etc., were initiated only at the discretion of the surgeon to confirm clinical findings. The initial report of this trial in 1998 reported a significant positive effect on survival only for stage III cases.<sup>284</sup> A subsequent follow-up in 2001 reported significantly improved overall survival for the treatment group (54% versus 38%;  $P = 0.0278$ ).<sup>283</sup> Subset analysis revealed the benefit was enjoyed predominantly by those with fifth–sixth edition UICC TNM stage III (57% versus 23%;  $P = 0.0024$ ) and stage IV (28% versus 5%;  $P = 0.0098$ ) disease.<sup>283</sup> Further subset analysis showed benefit for those with involved lymph nodes (46% versus 22%;  $P = 0.0027$ ) and those with serosal invasion (52% versus 25%;  $P = 0.0004$ ).<sup>283</sup> Although this trial has yet to be duplicated, and there are some methodological criticisms, it has encouraged continued investigation of both perioperative intraperitoneal therapy and methods to decrease the associated morbidity. In the view of advocates, this trial constitutes level I evidence in favor of such intraperitoneal therapy.<sup>281</sup>

## Chemotherapy Without Radiation

A succession of meta-analyses concerning the value (or non-value) of systemic chemotherapy for gastric cancer have been conducted over the past decade. In 1993, Hermans et al. published a meta-analysis of 11 randomized trials of adjuvant chemotherapy, mostly involving treatment with 5-FU-based regimens, conducted over the previous decade. The odds ratio of 0.88 among treated patients was not significant.<sup>285</sup> A year later, in response to a journal letter,<sup>286</sup> two additional trials were added, and the addition of 318 cases from the two erroneously omitted trials lowered the odds ratio to 0.82; this was of borderline significance (CI, 0.68–0.98).<sup>287</sup> In 1999, Earle and Maroun published a 13-trial meta-analysis of non-Asian trials published between 1980 and 1996, with a similar odds ratio for death in the treated group of 0.80 (95% CI, 0.66–0.97).<sup>288</sup> In 2000, Mari et al. published a 20-article, 3,658 patient meta-analysis with an odds ratio for the treated group of 0.82; with the additional trials and patients, this was significant (95% CI, 0.75–0.89;  $P$  less than 0.001).<sup>289</sup> Nonetheless, even including subgroup analyses, only a few trials showed significant results favoring chemotherapy,<sup>290–295</sup> and the authors still considered adjuvant chemotherapy as investigational.<sup>289</sup> In 2002, Panzini et al., from Italy, restricted meta-analysis to those trials where all patients were treated with “radical” surgical techniques. Of the 17 papers eligible for inclusion, 3,118 patients were available for analysis. Odds ratio for death among the treated cases was 0.72 (95% CI, 0.62–0.84),<sup>296</sup> and on the basis of this, a large confirmatory randomized controlled trial of cisplatin-based chemotherapy was recommended.<sup>296</sup> In 2001, a less-selective, but more-comprehensive, meta-analysis was conducted by the Swedish Council of Technology Assessment in Health Care (SBU),<sup>297</sup> based on 153 scientific papers, 18 reviews, 60 randomized studies, and 57 prospective studies encompassing 12,367 patients. The authors’ meta-analysis of 21 randomized adjuvant studies revealed a statistically significant survival benefit with odds ratio 0.84 (95% CI, 0.74–0.96); however, analyzing Western world and Asian studies separately, a statistically significant difference was noticed: Western world studies showed an odds ratio of 0.96 (95% CI, 0.83–1.12) and the Asian studies an odds ratio of 0.58 (95% CI, 0.44–0.76).<sup>297</sup> The authors concluded that adjuvant chemotherapy could not be recommended in Western patients, but that benefit in Japanese series was evident.<sup>297</sup> Overall, the benefit of adjuvant therapy in all these meta-analyses equates to an odds ratio of approximately 0.80 at best. The extent of surgical resection for patients entered into these adjuvant studies, and the consequent burden of residual locoregional microscopic disease, may, as Panzini et al. suggest, be the key confounding variable.<sup>296</sup> Nakajima et al., in a meta-analysis of 10 Japanese trials conducted at the Cancer Institute Hospital in Tokyo on radically treated surgical cases from 1959 to 1982 ( $n = 1,177$  cases), noted a much better odds ratio of 0.63 favoring the treatment groups ( $P$  less than 0.01).<sup>298</sup>

As depicted in Table 41.7, most trials of adjuvant systemic chemotherapy versus surgery alone have been negative.<sup>291,294,295,299–311</sup> For the positive trials, unusually low control group survival,<sup>295</sup> or findings at odds with other trials,<sup>294</sup> undermine general applicability.

Following the aforementioned INT-0116 adjuvant chemoradiation trial, for patients with disease resectable to



TABLE 41.7. Prospective randomized trials of adjuvant systemic chemotherapy.

Author	Year	Treatment group	N	Five-year survival	Survival Median survival	P value
Nakajima et al. <sup>299</sup>	1984	MMC + 5-FU+araC →F	81	68%	>60 months	0.09
		MMC + ftorafur + araC→ftora	83	63%	>60 months	
		Surgery alone	79	51%	>60 months	
Engstrom et al. <sup>300</sup>	1985	5-FU + MeCCNU	91	—	36.6 months	0.73
		Surgery alone	89	—	32.7 months	
Coombes et al. <sup>301</sup>	1990	FAM (5-FU + Adria+MMC)	148	35%	36 months	0.17
		Surgery alone	133	46%	36 months	
Krook et al. <sup>302</sup>	1991	5-FU + Adria	64	33%	34 months	0.88
		Surgery alone	61	32%	36 months	
Grau et al. <sup>291</sup>	1993	MMC	68	41%	—	0.025*
		Surgery alone	66	26%	—	
Hallsisey et al. <sup>303</sup>	1994	FAM	138	19%	17.3 months	0.14
		Postoperative radiotherapy alone	153	12%	12.9 months	
		Surgery alone	145	20%	14.7 months	
Macdonald et al. <sup>304</sup>	1995	FAM	93	—	32 months	0.57
		Surgery alone	100	—	28 months	
Tsavaris et al. <sup>305</sup>	1996	5-FU-epirub-MMC (FEM)	42	—	64 months	ns
		Surgery alone	42	—	81 months	
Neri et al. <sup>295</sup>	1996	5-FU-LV-epirub	48	25%	20.4 months	0.01*
		Surgery alone	55	13%	13.6 months	
Grau et al. <sup>329</sup>	1998	MMC-ftorafur	43	67%	—	0.04
		MMC	42	44%	—	
Nakajima et al. <sup>306</sup>	1999	MMC-5-FU-UFT	285	85.8%	>5 years	0.17
		Surgery alone	288	82.9%	>5 years	
Cirera et al. <sup>294</sup>	1999	MMC-tegafur	76	56%	74	0.04*
		Surgery alone	72	36%	29	
Langman et al. <sup>307</sup>	1999	Cimetidine	221	21%	13	0.42
		Surgery alone	221	18%	11	
Nashimoto et al. <sup>308</sup>	2003	MMC-5-FU-araC	126	91.2%	—	0.13
		Surgery alone	126	86.1%	—	
Chipponi et al. <sup>309</sup>	2004	5-FU-LV-CDDP	101	39%	—	ns
		Surgery alone	104	39%	—	
Sato et al. <sup>310</sup>	2004	5-DFUR	143	62.9%	—	0.79
		5-DFUR + OKT-432	144	63.8%	—	
Hartgrink et al. <sup>311</sup>	2004	Preop (neoadjuvant) FAMTX	29	—	18 months	0.17
		Surgery alone	30	—	30 months	

negative margins, clinical trials involving arms with only surgery or only postoperative adjuvant chemotherapy have become less feasible in the United States.<sup>272,273</sup>

To date, no neoadjuvant preoperative chemotherapy regimen has been shown superior to postoperative therapy or surgery alone in a Phase III prospective randomized trial, despite promising Phase II results.<sup>312</sup> Further, a recently reported trial of neoadjuvant FAMTX versus surgery alone showed median survival of 18 months for the treated group versus 30 months for the surgery-alone group ( $P = 0.17$ ). On the basis of this result, the risk that neoadjuvant treatment with insufficiently effective chemotherapy might jeopardize survival must be considered.<sup>311</sup>

### Advanced and Metastatic Disease

A variety of combination chemotherapy regimens have been used in the palliative management of patients with gastric cancer.<sup>313–319</sup> Although the EAP type regimens pioneered by

Preusser, Wilke, and colleagues<sup>317</sup> led to a new era in combination chemotherapy, in which expectations of response rates in excess of 30%, and some complete tumor regressions, were possible, the EAP regimen is now utilized only rarely because of its significant toxicity.<sup>320</sup> There are now other regimens that are widely used. The major regimens of current interest include methotrexate-directed 5-FU combinations,<sup>321</sup> infusional 5-FU regimens,<sup>37,314,322</sup> and combinations containing taxanes<sup>316</sup> and irinotecan-based regimens.<sup>315,323</sup>

Over the past decade, there has been interest in the use of prolonged infusion of 5-FU as a part of the combination chemotherapy treatment for stomach cancer. Crookes and colleagues<sup>314</sup> used continuous infusion 5-FU as a major component of a neoadjuvant program described below. Webb and colleagues reported important results with a combination regimen designated ECF (epirubicin, cisplatin, and 5-FU).<sup>322</sup> Of note, ECF uses protracted infusion of 5-FU at a daily rate of 200mg/m<sup>2</sup> with intermittent epirubicin and cisplatin. Epirubicin is an anthracycline analogue available in Western Europe for several years and now commercially available in

the United States (although its approval indication is for breast cancer, not gastrointestinal cancer, in the United States). ECF was tested in a major Phase III randomized trial reported in 1997.<sup>322</sup> This study compared ECF with FAMTX in patients with gastroesophageal adenocarcinoma. In this study, 274 patients with adenocarcinoma or undifferentiated cancer were randomized between FAMTX and ECF. The FAMTX regimen caused significant hematologic toxicity and was inferior in regard to response rate and survival when compared to ECF. The overall response rate for ECF was 45% versus 21% for FAMTX ( $P = 0.002$ ). The median survival for ECF was 8.9 versus 5.7 months ( $P = 0.0009$ ). At 1 year, 36% of ECF and 21% of FAMTX patients were alive. Webb and colleagues also assessed global quality of life scores in their study. The global quality of life was superior for ECF at 24 weeks. This advantage in quality of life, however, did not persist as patients were followed further on the study.<sup>322</sup> Of interest, Ross and colleagues performed a Phase III study of ECF versus a very similar regimen, MCF, that substituted mitomycin C (7 mg/m<sup>2</sup> every 6 weeks) for epirubicin and uses somewhat different doses of 5-FU (300 mg/m<sup>2</sup>/day  $\times$  24 weeks) and cisplatin (50 mg/m<sup>2</sup> every 3 weeks).<sup>324</sup> The overall rates of survival were no different between the ECF and MCF regimens. This trial supports the use of MCF if either epirubicin is not available or a clinician would prefer not to use an anthracycline.<sup>320</sup>

Other, more-recent, regimens include the combination of docetaxel-cisplatin<sup>316</sup> and the regimen of irinotecan-cisplatin.<sup>315</sup> The irinotecan and cisplatin combination has been evaluated and shown to have good activity in gastroesophageal cancers. The response rate for adenocarcinoma with the regimen was 12 of 23 (57%), with excellent palliation of tumor-related symptoms.<sup>315</sup> Another regimen of interest recently is the combination of docetaxel and cisplatin.<sup>316</sup> In a European study of 85 patients with advanced gastric cancer, the overall response rate was 36%, and 7 of 85 (8%) had complete responses. The median survival in this study was 10 months, and grade IV toxicity was seen in only 4% of cases.<sup>316</sup>

Data on therapy of advanced gastric cancer allow one to draw some conclusions in regard to the standard recommendations for patients with metastatic stomach cancer. It is reasonable to assume that several approaches can be considered appropriate chemotherapeutic management for patients with advanced gastric cancer. FAMTX is well tolerated and can certainly result in some complete responses in patients with gastric cancer, but it is no longer considered a front-line regimen for advanced gastric cancer (level I evidence). More promising approaches entail the use of continuous infusions of fluorinated pyrimidines, such as 5-FU. The ECF regimen, along with similar regimens using alternate anthracyclines, continue to be investigated. Finally, taxane- and irinotecan-based regimens are also of interest and appropriate for use in patients with advanced gastric cancer (level IIc data). However, it is important to stress that none of these regimens results in long-term control of metastatic adenocarcinoma of the stomach.

For a subset of cases with advanced locoregional disease followed by major response to chemotherapy, eventual R0 surgical resection is sometimes possible, and occasional long-term disease-free survival can result.<sup>325-327</sup> It should also be noted that surgical resection of isolated hepatic metastases,

before or after chemotherapy, can also result in occasional long-term disease-free survival.<sup>328</sup> In general, however, although some chemotherapy regimens produce major partial responses and complete response rates as high as 15%, such responses are usually not durable.

## References

1. Parkin DM, Bray FI, Devesa SS. Cancer burden in the year 2000. The global picture. *Eur J Cancer* 2001;37(suppl 8):S4-S66.
2. Borrmann R. *Geschweulste des Magens und Duodenums*, vol 4. Berlin: Springer Verlag, 1926.
3. Jarvi O, Lauren P. On the role of heterotopias of the intestinal epithelium in the pathogenesis of gastric cancer. *Acta Pathol Microbiol Scand* 1951;29(1):26-44.
4. Lauren T. The two histologic main types of gastric carcinoma. *Acta Pathol Microbiol Scand* 1965;64:31-49.
5. Stemmermann G, Fenoglio-Preiser C. Gastric cancer: epidemiology. In: Kelsen D, Daly J, Kern S, Levin B, Tepper J (eds). *Gastrointestinal Oncology: Principles and Practice*. Philadelphia: Lippincott Williams & Wilkins, 2002:311-324.
6. Fenoglio-Preiser CM, Noffsinger AE, Belli J, Stemmermann GN. Pathologic and phenotypic features of gastric cancer. *Semin Oncol* 1996;23(3):292-306.
7. Stemmermann GN, Fenoglio-Preiser C. Gastric carcinoma distal to the cardia: a review of the epidemiological pathology of the precursors to a preventable cancer. *Pathology* 2002;34(6):494-503.
8. Stemmermann GN, Hayashi T. Intestinal metaplasia of the gastric mucosa: a gross and microscopic study of its distribution in various disease states. *J Natl Cancer Inst* 1968;41(3):627-634.
9. Matsukura N, Suzuki K, Kawachi T, et al. Distribution of marker enzymes and mucin in intestinal metaplasia in human stomach and relation to complete and incomplete types of intestinal metaplasia to minute gastric carcinomas. *J Natl Cancer Inst* 1980;65(2):231-240.
10. Watanabe H, Jass J, Sobin L. Histological typing of gastric and oesophageal tumors. In: Organization WH (ed). *International Histologic Classification of Tumors*, 2nd ed. Berlin: Springer, 1990.
11. Mulligan RM, Rember RR. Histogenesis and biologic behavior of gastric carcinoma: study of one hundred thirty-eight cases. *AMA Arch Pathol* 1954;58(1):1-25.
12. Broders A. Carcinoma and other malignant lesions of the stomach: pathologic considerations. In: Waltman W, Gray H, Priestley J (eds). *Carcinoma and Other Malignant Lesions of the Stomach*. Philadelphia: Sanders, 1942:127.
13. Nagayo T, Komagome T. Histological studies of gastric mucosal cancer with special reference to relationship of histological pictures between the mucosal cancer and the cancer-bearing gastric mucosa. *Gann Monogr* 1961;56:101.
14. Ming SC. Gastric carcinoma. A pathobiological classification. *Cancer*. Jun 1977;39(6):2475-2485.
15. Goseki N, Takizawa T, Koike M. Differences in the mode of the extension of gastric cancer classified by histological type: new histological classification of gastric carcinoma. *Gut* 1992;33(5):606-612.
16. Songun I, van de Velde CJ, Arends JW, et al. Classification of gastric carcinoma using the Goseki system provides prognostic information additional to TNM staging. *Cancer (Phila)* 1999;85(10):2114-2118.
17. Parkin DM. Global cancer statistics in the year 2000. *Lancet Oncol* 2001;2(9):533-543.
18. Parkin DM, Pisani P, Ferlay J. Global cancer statistics. *CA Cancer J Clin* 1999;49(1):33-64, 31.
19. *Cancer Incidence in Five Continents*, vol VIII. Lyon: IARC Press, 2002.
20. Correa P. A human model of gastric carcinogenesis. *Cancer Res* 1988;48(13):3554-3560.

21. Correa P, Haenszel W, Cuello C, Tannenbaum S, Archer M. A model for gastric cancer epidemiology. *Lancet* 1975;2(7924):58-60.
22. Correa P. Human gastric carcinogenesis: a multistep and multifactorial process: First American Cancer Society Award Lecture on Cancer Epidemiology and Prevention. *Cancer Res* 1992;52(24):6735-6740.
23. Parsonnet J, Friedman GD, Vandersteen DP, et al. *Helicobacter pylori* infection and the risk of gastric carcinoma. *N Engl J Med* 1991;325(16):1127-1131.
24. Parsonnet J, Vandersteen D, Goates J, Sibley RK, Pritikin J, Chang Y. *Helicobacter pylori* infection in intestinal- and diffuse-type gastric adenocarcinomas. *J Natl Cancer Inst* 1991;83(9):640-643.
25. Nomura A, Stemmermann GN, Chyou PH, Kato I, Perez-Perez GI, Blaser MJ. *Helicobacter pylori* infection and gastric carcinoma among Japanese Americans in Hawaii. *N Engl J Med* 1991;325(16):1132-1136.
26. Kono S, Ikeda M, Ogata M. Salt and geographical mortality of gastric cancer and stroke in Japan. *J Epidemiol Community Health* 1983;37(1):43-46.
27. Leach SD, Cook A, Challis B. Bacterially Mediated N-Nitrosation Reactions and Endogenous Formation of N-Nitroso Compounds, vol 84. Lyon: IARC, 1987.
28. Tannenbaum SR, Moran D, Rand W, Cuello C, Correa P. Gastric cancer in Colombia. IV. Nitrite and other ions in gastric contents of residents from a high-risk region. *J Natl Cancer Inst* 1979;62(1):9-12.
29. De Bernardinis G, Guadagni S, Pistoia MA, et al. Gastric juice nitrite and bacteria in gastroduodenal disease and resected stomach. *Tumori* 1983;69(3):231-237.
30. Wogan GN. Diet and nutrition as risk factors for cancer. *Princess Takamatsu Symp* 1985;16:3-10.
31. Tannenbaum SR. Diet and exposure to N-nitroso compounds. *Princess Takamatsu Symp* 1985;16:67-75.
32. Choi NW, Miller AB, Fodor JG, et al. Consumption of precursors of N-nitroso compounds and human gastric cancer. *IARC Sci Publ* 1987(84):492-496.
33. Leach SA, Thompson M, Hill M. Bacterially catalysed N-nitrosation reactions and their relative importance in the human stomach. *Carcinogenesis (Oxf)* 1987;8(12):1907-1912.
34. Sasazuki S, Sasaki S, Tsubono Y, et al. The effect of 5-year vitamin C supplementation on serum pepsinogen level and *Helicobacter pylori* infection. *Cancer Sci* 2003;94(4):378-382.
35. Bartsch H, Ohshima H, Pignatelli B. Inhibitors of endogenous nitrosation. Mechanisms and implications in human cancer prevention. *Mutat Res* 1988;202(2):307-324.
36. Bartsch H, Pignatelli B, Calmels S, Ohshima H. Inhibition of nitrosation. *Basic Life Sci* 1993;61:27-44.
37. Webb PM, Bates CJ, Palli D, Forman D. Gastric cancer, gastritis and plasma vitamin C: results from an international correlation and cross-sectional study. The Eurogast Study Group. *Int J Cancer* 1997;73(5):684-689.
38. Kono S, Ikeda M, Tokudome S, Kuratsune M. A case-control study of gastric cancer and diet in northern Kyushu, Japan. *Jpn J Cancer Res* 1988;79(10):1067-1074.
39. McConnell R. The Genetics of Gastro-intestinal disorders. London: Oxford University Press, 1966.
40. Nagayo T. Microscopical cancer of the stomach: a study on histogenesis of gastric carcinoma. *Int J Cancer* 1975;16(1):52-60.
41. Brown WM, Doll R. Mortality from cancer and other causes after radiotherapy for ankylosing spondylitis. *Br Med J* 1965;5474:1327-1332.
42. Tarbell NJ, Gelber RD, Weinstein HJ, Mauch P. Sex differences in risk of second malignant tumours after Hodgkin's disease in childhood. *Lancet* 1993;341(8858):1428-1432.
43. Lynch HT, Smyrk T, Lynch J. An update of HNPCC (Lynch syndrome). *Cancer Genet Cytogenet* 1997;93(1):84-99.
44. Lehtola J. Family study of gastric carcinoma, with special reference to histological types. *Scand J Gastroenterol Suppl* 1978;50:3-54.
45. Lehtola J. Family behaviour of gastric carcinoma. *Ann Clin Res* 1981;13(3):144-148.
46. Ihamaki T, Sipponen P. Family characteristics of gastric carcinoma. *Ann Clin Res* 1981;13(3):149-150.
47. Bonney GE, Elston RC, Correa P, et al. Genetic etiology of gastric carcinoma: I. Chronic atrophic gastritis. *Genet Epidemiol* 1986;3(4):213-224.
48. Mecklin JP, Jarvinen HJ. Tumor spectrum in cancer family syndrome (hereditary nonpolyposis colorectal cancer). *Cancer (Phila)* 1991;68(5):1109-1112.
49. Keller G, Rotter M, Vogelsang H, et al. Microsatellite instability in adenocarcinomas of the upper gastrointestinal tract. Relation to clinicopathological data and family history. *Am J Pathol* 1995;147(3):593-600.
50. Varley JM, McGown G, Thorncroft M, et al. An extended Li-Fraumeni kindred with gastric carcinoma and a codon 175 mutation in TP53. *J Med Genet* 1995;32(12):942-945.
51. Aarnio M, Mecklin JP, Aaltonen LA, Nystrom-Lahti M, Jarvinen HJ. Life-time risk of different cancers in hereditary non-polyposis colorectal cancer (HNPCC) syndrome. *Int J Cancer* 1995;64(6):430-433.
52. Guilford PJ, Hopkins JB, Grady WM, et al. E-cadherin germline mutations define an inherited cancer syndrome dominated by diffuse gastric cancer. *Hum Mutat* 1999;14(3):249-255.
53. Tersmette AC, Offerhaus GJ, Tersmette KW, et al. Meta-analysis of the risk of gastric stump cancer: detection of high risk patient subsets for stomach cancer after remote partial gastrectomy for benign conditions. *Cancer Res* 1990;50(20):6486-6489.
54. Schistosomies, Liver Flukes, and *Helicobacter pylori*, vol 61. Lyon: IARC, 1994.
55. Huang JQ, Zheng GF, Sumanac K, Irvine EJ, Hunt RH. Meta-analysis of the relationship between cagA seropositivity and gastric cancer. *Gastroenterology* 2003;125(6):1636-1644.
56. Queiroz DM, Mendes EN, Rocha GA, et al. cagA-positive *Helicobacter pylori* and risk for developing gastric carcinoma in Brazil. *Int J Cancer* 1998;78(2):135-139.
57. Grimley CE, Holder RL, Loft DE, Morris A, Nwokolo CU. *Helicobacter pylori*-associated antibodies in patients with duodenal ulcer, gastric and oesophageal adenocarcinoma. *Eur J Gastroenterol Hepatol* 1999;11(5):503-509.
58. Pisani P, Parkin DM, Munoz N, Ferlay J. Cancer and infection: estimates of the attributable fraction in 1990. *Cancer Epidemiol Biomarkers Prev* 1997;6(6):387-400.
59. Zhou L, Sung JJ, Lin S, et al. A five-year follow-up study on the pathological changes of gastric mucosa after *H. pylori* eradication. *Chin Med J (Engl)* 2003;116(1):11-14.
60. Walker MM. Is intestinal metaplasia of the stomach reversible? *Gut* 2003;52(1):1-4.
61. Ito M, Haruma K, Kamada T, et al. *Helicobacter pylori* eradication therapy improves atrophic gastritis and intestinal metaplasia: a 5-year prospective study of patients with atrophic gastritis. *Aliment Pharmacol Ther* 2002;16(8):1449-1456.
62. van Grieken NC, Meijer GA, Kale I, et al. Quantitative assessment of gastric antrum atrophy shows restitution to normal histology after *Helicobacter pylori* eradication. *Digestion* 2004;69(1):27-33.
63. Yamada T, Miwa H, Fujino T, Hirai S, Yokoyama T, Sato N. Improvement of gastric atrophy after *Helicobacter pylori* eradication therapy. *J Clin Gastroenterol* 2003;36(5):405-410.
64. Munoz N, Kato I, Peraza S, et al. Prevalence of precancerous lesions of the stomach in Venezuela. *Cancer Epidemiol Biomarkers Prev* 1996;5(1):41-46.
65. Gammon MD, Terry MB, Arber N, et al. Nonsteroidal anti-inflammatory drug use associated with reduced incidence of adenocarcinomas of the esophagus and gastric cardia that over-



- express cyclin D1: a population-based study. *Cancer Epidemiol Biomarkers Prev* 2004;13(1):34–39.
66. Wong BC, Lam SK, Wong WM, et al. *Helicobacter pylori* eradication to prevent gastric cancer in a high-risk region of China: a randomized controlled trial. *JAMA* 2004;291(2):187–194.
  67. Takahashi S. Long-term *Helicobacter pylori* infection and the development of atrophic gastritis and gastric cancer in Japan. *J Gastroenterol* 2002;37(suppl 13):24–27.
  68. La Vecchia C, Negri E, Franceschi S, Gentile A. Family history and the risk of stomach and colorectal cancer. *Cancer (Phila)* 1992;70(1):50–55.
  69. Palli D, Galli M, Caporaso NE, et al. Family history and risk of stomach cancer in Italy. *Cancer Epidemiol Biomarkers Prev* 1994;3(1):15–18.
  70. Goldgar DE, Easton DF, Cannon-Albright LA, Skolnick MH. Systematic population-based assessment of cancer risk in first-degree relatives of cancer probands. *J Natl Cancer Inst* 1994;86(21):1600–1608.
  71. Videback A, Mosbeck J. The etiology of gastric carcinoma elucidated by a study of 302 pedigrees. *Acta Med Scand* 1954;149:159–173.
  72. Powell SM, Smith MF. Gastric cancer: molecular biology and genetics. In: Kelsen DP, Daly JM, Kern SE, Levin B, Tepper JE (eds). *Gastrointestinal Oncology: Principles and Practice*. Philadelphia: Lippincott Williams & Wilkins, 2002:325–340.
  73. El-Rifai W, Powell SM. Molecular biology of gastric cancer. *Semin Radiat Oncol* 2002;12(2):128–140.
  74. Guilford P, Hopkins J, Harraway J, et al. E-cadherin germline mutations in familial gastric cancer. *Nature (Lond)* 1998;392(6674):402–405.
  75. Gayther SA, Goringe KL, Ramus SJ, et al. Identification of germ-line E-cadherin mutations in gastric cancer families of European origin. *Cancer Res* 1998;58(18):4086–4089.
  76. Lynch HT, Smyrk TC, Lanspa SJ, et al. Upper gastrointestinal manifestations in families with hereditary flat adenoma syndrome. *Cancer (Phila)* 1993;71(9):2709–2714.
  77. Sugano K, Taniguchi T, Saeki M, Tsunematsu Y, Tomaru U, Shimoda T. Germline p53 mutation in a case of Li-Fraumeni syndrome presenting gastric cancer. *Jpn J Clin Oncol* 1999;29(10):513–516.
  78. Utsunomiya J. The concept of hereditary colorectal cancer and the implications of its study. In: Utsunomiya J, Lynch HT (eds). *Hereditary Colorectal Cancer: Proceedings of the Fourth International Symposium of Colorectal Cancer (ISCC-4)*, November 9–11, 1989, Kobe, Japan. New York: Springer-Verlag, 1990:3–16.
  79. Offerhaus GJ, Giardiello FM, Krush AJ, et al. The risk of upper gastrointestinal cancer in familial adenomatous polyposis. *Gastroenterology* 1992;102(6):1980–1982.
  80. Tahara E. Molecular biology of gastric cancer. *World J Surg* 1995;19(4):484–488; discussion 489–490.
  81. Hiyama E, Yokoyama T, Tatsumoto N, et al. Telomerase activity in gastric cancer. *Cancer Res* 1995;55(15):3258–3262.
  82. Hollstein M, Shomer B, Greenblatt M, et al. Somatic point mutations in the p53 gene of human tumors and cell lines: updated compilation. *Nucleic Acids Res* 1996;24(1):141–146.
  83. Mayer B, Johnson JP, Leitzl F, et al. E-cadherin expression in primary and metastatic gastric cancer: down-regulation correlates with cellular dedifferentiation and glandular disintegration. *Cancer Res* 1993;53(7):1690–1695.
  84. Gofuku J, Shiozaki H, Tsujinaka T, et al. Expression of E-cadherin and alpha-catenin in patients with colorectal carcinoma. Correlation with cancer invasion and metastasis. *Am J Clin Pathol* 1999;111(1):29–37.
  85. Nakajima M, Sawada H, Yamada Y, et al. The prognostic significance of amplification and overexpression of *c-met* and *c-erb B-2* in human gastric carcinomas. *Cancer (Phila)* 1999;85(9):1894–1902.
  86. Taniguchi K, Yonemura Y, Nojima N, et al. The relation between the growth patterns of gastric carcinoma and the expression of hepatocyte growth factor receptor (*c-met*), autocrine motility factor receptor, and urokinase-type plasminogen activator receptor. *Cancer (Phila)* 1998;82(11):2112–2122.
  87. Yokozaki H, Kuniyasu H, Yasui W, Tahara E. [Genetic characteristics of scirrhous gastric carcinomas.] *Gan To Kagaku Ryoho* 1994;21(14):2371–2377.
  88. Marchbank T, Westley BR, May FE, Calnan DP, Playford RJ. Dimerization of human pS2 (TFF1) plays a key role in its protective/healing effects. *J Pathol* 1998;185(2):153–158.
  89. Luqmani Y, Bennett C, Paterson I, et al. Expression of the pS2 gene in normal, benign and neoplastic human stomach. *Int J Cancer* 1989;44(5):806–812.
  90. Muller W, Borchard F. pS2 protein in gastric carcinoma and normal gastric mucosa: association with clinicopathological parameters and patient survival. *J Pathol* 1993;171(4):263–269.
  91. Machado JC, Carneiro F, Ribeiro P, Blin N, Sobrinho-Simoes M. pS2 protein expression in gastric carcinoma. An immunohistochemical and immunoradiometric study. *Eur J Cancer* 1996;32A(9):1585–1590.
  92. Wu MS, Shun CT, Wang HP, Lee WJ, Wang TH, Lin JT. Loss of pS2 protein expression is an early event of intestinal-type gastric cancer. *Jpn J Cancer Res* 1998;89(3):278–282.
  93. Calnan DP, Westley BR, May FE, Floyd DN, Marchbank T, Playford RJ. The trefoil peptide TFF1 inhibits the growth of the human gastric adenocarcinoma cell line AGS. *J Pathol* 1999;188(3):312–317.
  94. Fujimoto J, Yasui W, Tahara H, Tahara E, Kudo Y, Yokozaki H. DNA hypermethylation at the pS2 promoter region is associated with early stage of stomach carcinogenesis. *Cancer Lett* 2000;149(1-2):125–134.
  95. Katoh M. Trefoil factors and human gastric cancer (review). *Int J Mol Med* 2003;12(1):3–9.
  96. Onda M, Tokunaga A, Nishi K, et al. The correlation of epidermal growth factor with invasion and metastasis in human gastric cancer. *Jpn J Surg* 1990;20(3):269–274.
  97. Yasui W, Sumiyoshi H, Hata J, et al. Expression of epidermal growth factor receptor in human gastric and colonic carcinomas. *Cancer Res* 1988;48(1):137–141.
  98. Yoshiyuki T, Shimizu Y, Onda M, et al. Immunohistochemical demonstration of epidermal growth factor in human gastric cancer xenografts of nude mice. *Cancer (Phila)* 1990;65(4):953–957.
  99. Gamboa-Dominguez A, Dominguez-Fonseca C, Quintanilla-Martinez L, et al. Epidermal growth factor receptor expression correlates with poor survival in gastric adenocarcinoma from Mexican patients: a multivariate analysis using a standardized immunohistochemical detection system. *Mod Pathol* 2004;17(5):579–587.
  100. Pinto-de-Sousa J, David L, Almeida R, et al. c-erb B-2 expression is associated with tumor location and venous invasion and influences survival of patients with gastric carcinoma. *Int J Surg Pathol* 2002;10(4):247–256.
  101. Aoyagi K, Kohfuji K, Yano S, et al. Evaluation of the epidermal growth factor receptor (EGFR) and c-erbB-2 in superspreading-type and penetrating-type gastric carcinoma. *Kurume Med J* 2001;48(3):197–200.
  102. Ghaderi A, Vasei M, Maleck-Hosseini SA, et al. The expression of c-erbB-1 and c-erbB-2 in Iranian patients with gastric carcinoma. *Pathol Oncol Res* 2002;8(4):252–256.
  103. el-Hariry I, Pignatelli M, Lemoine N. Fibroblast growth factor 1 and fibroblast growth factor 2 immunoreactivity in gastrointestinal tumours. *J Pathol* 1997;181(1):39–45.
  104. Ueki T, Koji T, Tamiya S, Nakane PK, Tsuneyoshi M. Expression of basic fibroblast growth factor and fibroblast growth factor

- receptor in advanced gastric carcinoma. *J Pathol* 1995;177(4):353–361.
105. Yu J, Leung WK, Ebert MP, et al. Absence of cyclin D2 expression is associated with promoter hypermethylation in gastric cancer. *Br J Cancer* 2003;88(10):1560–1565.
  106. Oshimo Y, Nakayama H, Ito R, et al. Promoter methylation of cyclin D2 gene in gastric carcinoma. *Int J Oncol* 2003;23(6):1663–1670.
  107. Takano Y, Kato Y, Masuda M, Ohshima Y, Okayasu I. Cyclin D2, but not cyclin D1, overexpression closely correlates with gastric cancer progression and prognosis. *J Pathol* 1999;189(2):194–200.
  108. Muller W, Noguchi T, Wirtz HC, Hommel G, Gabbert HE. Expression of cell-cycle regulatory proteins cyclin D1, cyclin E, and their inhibitor p21 WAF1/CIP1 in gastric cancer. *J Pathol* 1999;189(2):186–193.
  109. Yu J, Miehke S, Ebert MP, et al. Expression of cyclin genes in human gastric cancer and in first degree relatives. *Chin Med J (Engl)* 2002;115(5):710–715.
  110. Uefuji K, Ichikura T, Mochizuki H, Shinomiya N. Expression of cyclooxygenase-2 protein in gastric adenocarcinoma. *J Surg Oncol* 1998;69(3):168–172.
  111. Ristimäki A, Honkanen N, Jankala H, Sipponen P, Harkonen M. Expression of cyclooxygenase-2 in human gastric carcinoma. *Cancer Res* 1997;57(7):1276–1280.
  112. Sheu BS, Yang HB, Sheu SM, Huang AH, Wu JJ. Higher gastric cyclooxygenase-2 expression and precancerous change in *Helicobacter pylori*-infected relatives of gastric cancer patients. *Clin Cancer Res* 2003;9(14):5245–5251.
  113. Buskens CJ, Ristimäki A, Offerhaus GJ, Richel DJ, van Lanschot JJ. Role of cyclooxygenase-2 in the development and treatment of oesophageal adenocarcinoma. *Scand J Gastroenterol Suppl* 2003(239):87–93.
  114. Sakamoto C. Roles of COX-1 and COX-2 in gastrointestinal pathophysiology. *J Gastroenterol* 1998;33(5):618–624.
  115. Yu LZ, Gao HJ, Bai JF, et al. Expression of COX-2 proteins in gastric mucosal lesions. *World J Gastroenterol* 2004;10(2):292–294.
  116. Xue YW, Zhang QF, Zhu ZB, Wang Q, Fu SB. Expression of cyclooxygenase-2 and clinicopathologic features in human gastric adenocarcinoma. *World J Gastroenterol* 2003;9(2):250–253.
  117. Tatsuguchi A, Matsui K, Shinji Y, et al. Cyclooxygenase-2 expression correlates with angiogenesis and apoptosis in gastric cancer tissue. *Hum Pathol* 2004;35(4):488–495.
  118. Jolly K, Cheng KK, Langman MJ. NSAIDs and gastrointestinal cancer prevention. *Drugs* 2002;62(6):945–956.
  119. Gonzalez-Perez A, Garcia Rodriguez LA, Lopez-Ridaura R. Effects of non-steroidal anti-inflammatory drugs on cancer sites other than the colon and rectum: a meta-analysis. *BMC Cancer* 2003;3(1):28.
  120. Zaridze D, Borisova E, Maximovitch D, Chkhikvadze V. Aspirin protects against gastric cancer: results of a case-control study from Moscow, Russia. *Int J Cancer* 1999;82(4):473–476.
  121. Wong BC, Zhu GH, Lam SK. Aspirin induced apoptosis in gastric cancer cells. *Biomed Pharmacother* 1999;53(7):315–318.
  122. Jiang XH, Wong BC. Cyclooxygenase-2 inhibition and gastric cancer. *Curr Pharm Res* 2003;9(27):2281–2288.
  123. Koshiba M, Ogawa O, Habuchi T, et al. Infrequent *ras* mutation in human stomach cancers. *Jpn J Cancer Res* 1993;84(2):163–167.
  124. Inoue T, Chung YS, Yashiro M, et al. Transforming growth factor-beta and hepatocyte growth factor produced by gastric fibroblasts stimulate the invasiveness of scirrhous gastric cancer cells. *Jpn J Cancer Res* 1997;88(2):152–159.
  125. La Rosa S, Uccella S, Erba S, Capella C, Sessa F. Immunohistochemical detection of fibroblast growth factor receptors in normal endocrine cells and related tumors of the digestive system. *Appl Immunohistochem Mol Morphol* 2001;9(4):319–328.
  126. Wanebo HJ, Kennedy BJ, Chmiel J, Steele G Jr, Winchester D, Osteen R. Cancer of the stomach. A patient care study by the American College of Surgeons. *Ann Surg* 1993;218(5):583–592.
  127. Hundahl SA, Phillips JL, Menck HR. The National Cancer Data Base Report on poor survival of U.S. gastric carcinoma patients treated with gastrectomy: fifth edition American Joint Committee on Cancer staging, proximal disease, and the “different disease” hypothesis. *Cancer (Phila)* 2000;88(4):921–932.
  128. Fujii M. [Results of mass gastric examination in Fukuoka prefecture, with special reference to the comparison with detection of stomach diseases among out-patients.] *Igaku Kenkyu* 1970;40(5):459–476.
  129. Okui K, Tejima H. Evaluation of gastric mass survey. *Acta Chir Scand* 1980;146(3):185–187.
  130. Takagi K. [Japanese cancer: retrospective and prospective views, gastric cancer.] *Gan To Kagaku Ryoho* 1984;11(3 pt 2):716–726.
  131. Fukutomi H, Sakita T. Analysis of early gastric cancer cases collected from major hospitals and institutes in Japan. *Jpn J Clin Oncol* 1984;14(2):169–179.
  132. Hisamichi S, Sugawara N. Mass screening for gastric cancer by X-ray examination. *Jpn J Clin Oncol* 1984;14(2):211–223.
  133. Kampschoer GH, Fujii A, Masuda Y. Gastric cancer detected by mass survey. Comparison between mass survey and outpatient detection. *Scand J Gastroenterol* 1989;24(7):813–817.
  134. Yoshihara M, Sumii K, Haruma K, et al. The usefulness of gastric mass screening using serum pepsinogen levels compared with photofluorography. *Hiroshima J Med Sci* 1997;46(2):81–86.
  135. Sasamori N, Hinohara S, Tamura M, et al. Results of screening for cancer in Japanese in the prime of life: an analysis of nationwide MHTS and human dry dock statistics. Preventive Medicine Committee of the Japan Hospital Association. *Jpn Hosp* 1999(18):71–78.
  136. Rozen P. Cancer of the gastrointestinal tract: early detection or early prevention? *Eur J Cancer Prev* 2004;13(1):71–75.
  137. Habermann CR, Weiss F, Riecken R, et al. Preoperative staging of gastric adenocarcinoma: comparison of helical CT and endoscopic US. *Radiology* 2004;230(2):465–471.
  138. Botet JF, Lightdale C. Endoscopic sonography of the upper gastrointestinal tract. *AJR Am J Roentgenol* 1991;156(1):63–68.
  139. Botet JF, Lightdale CJ, Zauber AG, et al. Preoperative staging of gastric cancer: comparison of endoscopic US and dynamic CT. *Radiology* 1991;181(2):426–432.
  140. Smith JW, Brennan MF, Botet JF, Gerdes H, Lightdale CJ. Preoperative endoscopic ultrasound can predict the risk of recurrence after operation for gastric carcinoma. *J Clin Oncol* 1993;11(12):2380–2385.
  141. Kienle P, Buhl K, Kuntz C, et al. Prospective comparison of endoscopy, endosonography and computed tomography for staging of tumours of the oesophagus and gastric cardia. *Digestion* 2002;66(4):230–236.
  142. Takao M, Fukuda T, Iwanaga S, Hayashi K, Kusano H, Okudaira S. Gastric cancer: evaluation of triphasic spiral CT and radiologic-pathologic correlation. *J Comput Assist Tomogr* 1998;22(2):288–294.
  143. Ho CL. Clinical PET imaging: an Asian perspective. *Ann Acad Med Singapore* 2004;33(2):155–165.
  144. Mochiki E, Kuwano H, Katoh H, Asao T, Oriuchi N, Endo K. Evaluation of <sup>18</sup>F-2-deoxy-2-fluoro-D-glucose positron emission tomography for gastric cancer. *World J Surg* 2004;28(3):247–253.
  145. Stahl A, Ott K, Weber WA, et al. FDG PET imaging of locally advanced gastric carcinomas: correlation with endoscopic and histopathological findings. *Eur J Nucl Med Mol Imaging* 2003;30(2):288–295.
  146. Koga H, Sasaki M, Kuwabara Y, et al. An analysis of the physiological FDG uptake pattern in the stomach. *Ann Nucl Med* 2003;17(8):733–738.

147. Yeung HW, Macapinlac H, Karpeh M, Finn RD, Larson SM. Accuracy of FDG-PET in gastric cancer. Preliminary experience. *Clin Positron Imaging* 1998;1(4):213-221.
148. Yoshioka T, Yamaguchi K, Kubota K, et al. Evaluation of <sup>18</sup>F-FDG PET in patients with a metastatic or recurrent gastric cancer. *J Nucl Med* 2003;44(5):690-699.
149. Giger U, Schafer M, Krahenbuhl L. Technique and value of staging laparoscopy. *Dig Surg* 2002;19(6):473-478.
150. Ozmen MM, Zulfikaroglu B, Ozalp N, Ziraman I, Hengirmen S, Sahin B. Staging laparoscopy for gastric cancer. *Surg Laparosc Endosc Percutan Tech* 2003;13(4):241-244.
151. Lavonius MI, Gullichsen R, Salo S, Sonninen P, Ovaska J. Staging of gastric cancer: a study with spiral computed tomography, ultrasonography, laparoscopy, and laparoscopic ultrasonography. *Surg Laparosc Endosc Percutan Tech* 2002;12(2):77-81.
152. Clements DM, Bowrey DJ, Havard TJ. The role of staging investigations for oesophago-gastric carcinoma. *Eur J Surg Oncol* 2004;30(3):309-312.
153. Blackshaw GR, Barry JD, Edwards P, Allison MC, Thomas GV, Lewis WG. Laparoscopy significantly improves the perceived preoperative stage of gastric cancer. *Gastric Cancer* 2003;6(4):225-229.
154. Wilkiemeyer MB, Bieligm SC, Ashfaq R, Jones DB, Rege RV, Fleming JB. Laparoscopy alone is superior to peritoneal cytology in staging gastric and esophageal carcinoma. *Surg Endosc* 2004;18(5):852-856.
155. Rau B, Hunerbein M. Diagnostic laparoscopy: indications and benefits. *Langenbecks Arch Surg* 2005;390:187-196.
156. Sobin LH, Hermanek P, Hutter RV. TNM classification of malignant tumors. A comparison between the new (1987) and the old editions. *Cancer (Phila)* 1988;61(11):2310-2314.
157. Fleming ID, Cooper JS, Henson DE, et al. *AJCC Cancer Staging Manual*, 5th ed. Philadelphia: Lippincott-Raven, 1997.
158. Hayes N, Ng EK, Raimes SA, et al. Total gastrectomy with extended lymphadenectomy for "curable" stomach cancer: experience in a non-Japanese Asian center. *J Am Coll Surg* 1999;188(1):27-32.
159. Japanese Gastric Cancer A. Japanese Classification of Gastric Carcinoma, 2nd English ed. *Gastric Cancer* 1998;1(1):10-24.
160. Japanese Classification of Gastric Carcinoma, 1st English ed. Tokyo: Kanehara, 1995.
161. Ichikura T, Fujino K, Ikawa H, Tomimatsu S, Uefuji K, Tamakuma S. Proposal of a risk score for recurrence in patients with curatively resected gastric cancer. *Surg Today* 1993;23(9):759-764.
162. Shiu MH, Perrotti M, Brennan MF. Adenocarcinoma of the stomach: a multivariate analysis of clinical, pathologic and treatment factors. *Hepatogastroenterology* 1989;36(1):7-12.
163. Okusa T, Nakane Y, Boku T, et al. Quantitative analysis of nodal involvement with respect to survival rate after curative gastrectomy for carcinoma. *Surg Gynecol Obstet* 1990;170(6):488-494.
164. de Manzoni G, Verlato G, Guglielmi A, Laterza E, Genna M, Cordiano C. Prognostic significance of lymph node dissection in gastric cancer. *Br J Surg* 1996;83(11):1604-1607.
165. Jatzko GR, Lisborg PH, Denk H, Klimpfinger M, Stettner HM. A 10-year experience with Japanese-type radical lymph node dissection for gastric cancer outside of Japan. *Cancer (Phila)* 1995;76(8):1302-1312.
166. Bottcher K, Becker K, Busch R, Roder JD, Siewert JR. [Prognostic factors in stomach cancer. Results of a uni- and multivariate analysis.] *Chirurg* 1992;63(8):656-661.
167. Makino M, Moriwaki S, Yonekawa M, Oota M, Kimura O, Kaibara N. Prognostic significance of the number of metastatic lymph nodes in patients with gastric cancer. *J Surg Oncol* 1991;47(1):12-16.
168. Adachi Y, Kamakura T, Mori M, Baba H, Maehara Y, Sugimachi K. Prognostic significance of the number of positive lymph nodes in gastric carcinoma. *Br J Surg* 1994;81(3):414-416.
169. Ichikura T, Tomimatsu S, Okusa Y, Uefuji K, Tamakuma S. Comparison of the prognostic significance between the number of metastatic lymph nodes and nodal stage based on their location in patients with gastric cancer. *J Clin Oncol* 1993;11(10):1894-1900.
170. Jaehne J, Meyer HJ, Maschek H, Geerlings H, Burns E, Pichlmayr R. Lymphadenectomy in gastric carcinoma. A prospective and prognostic study. *Arch Surg* 1992;127(3):290-294.
171. Roder JD, Bottcher K, Busch R, Wittekind C, Hermanek P, Siewert JR. Classification of regional lymph node metastasis from gastric carcinoma. German Gastric Cancer Study Group. *Cancer (Phila)* 1998;82(4):621-631.
172. Karpeh MS, Leon L, Klimstra D, Brennan MF. Lymph node staging in gastric cancer: is location more important than Number? An analysis of 1,038 patients. *Ann Surg* 2000;232(3):362-371.
173. Ichikura T, Tomimatsu S, Uefuji K, et al. Evaluation of the New American Joint Committee on Cancer/International Union against cancer classification of lymph node metastasis from gastric carcinoma in comparison with the Japanese classification. *Cancer (Phila)* 1999;86(4):553-558.
174. Yoo CH, Noh SH, Kim YI, Min JS. Comparison of prognostic significance of nodal staging between old (4th edition) and new (5th edition) UICC TNM classification for gastric carcinoma. *International Union Against Cancer. World J Surg* 1999;23(5):492-497; discussion 497-498.
175. Kattan MW, Karpeh MS, Mazumdar M, Brennan MF. Post-operative nomogram for disease-specific survival after an R0 resection for gastric carcinoma. *J Clin Oncol* 2003;21(19):3647-3650.
176. Siewert JR, Bottcher K, Stein HJ, Roder JD. Relevant prognostic factors in gastric cancer: ten-year results of the German Gastric Cancer Study. *Ann Surg* 1998;228(4):449-461.
177. McNeer G, Sunderland D, McInnes G. A more thorough operation for gastric cancer: anatomical basis and description of technique. *Cancer (Phila)* 1951;4:957-967.
178. Lewis F, Wangenstein O. Exploration following resection of the colon, rectum, or stomach for carcinoma with lymph node metastases. *Surg Forum* 1950;1950:535-540.
179. Remine W, Priestley L. Late results after total gastrectomy. *Surg Gynecol Obstet* 1952;94:519-525.
180. McNeer G, Pack G. *Neoplasms of the Stomach*. Philadelphia: Lippincott, 1967.
181. Gilbertson V. Results of treatment of stomach cancer: an appraisal of efforts for more extensive surgery and a report of 1,983 cases. *Cancer (Phila)* 1969;23:1305-1308.
182. Kajitani T. The general rules for the gastric cancer study in surgery and pathology. Part I. Clinical classification. *Jpn J Surg* 1981;11(2):127-139.
183. Kajitani T, Hoshino T. Studies on five-year survivals after surgery for gastric carcinoma. *Rev Surg* 1965;22(6):398-399.
184. Kajitani T, Nishi M. [Surgical treatment of gastric cancer: pyloric gastrectomy.] *Gan No Rinsho* 1972;Suppl:269-274.
185. Nakajima T, Kajitani T. Surgical treatment of gastric cancer with special reference to lymph node dissection. In: Friedman M, Ogawa M, Kisner D (eds). *Diagnosis and Treatment of Upper Gastrointestinal Tumors*. Amsterdam: Excerpta Medica, 1981: 207-223.
186. Takagi K, Nishi M, Kajitani T. Surgical treatment of gastric cancer today. *Wien Klin Wochenschr* 1987;99(12):410-415.
187. Nakajima T, Fukami A, Ohashi I, Kajitani T. Long-term follow-up study of gastric cancer patients treated with surgery and adjuvant chemotherapy with mitomycin C. *Int J Clin Pharmacol Biopharm* 1978;16(5):209-216.
188. Ohta K, Nishi M, Nakajima T, Kajitani T. [Indications for total gastrectomy combined with pancreaticosplenectomy in the treatment of middle gastric cancer.] *Nippon Geka Gakkai Zasshi* 1989;90(9):1326-1330.



189. Maruyama K, Okabayashi K, Kinoshita T. Progress in gastric cancer surgery in Japan and its limits of radicality. *World J Surg* 1987;11(4):418-425.
190. Watanabe S, Arimoto H. Standardized mortality rates of cancer by prefecture in 1979-1981 and 1984-1986 in Japan. *Jpn J Clin Oncol* 1990;20(3):316-337.
191. Davis DL, Hoel D, Fox J, Lopez A. International trends in cancer mortality in France, West Germany, Italy, Japan, England and Wales, and the USA. *Lancet* 1990;336(8713):474-481.
192. The Third Japan-US Conference on Biostatistics in the Study of Human Cancer. November 11-13, 1988, Hiroshima, Japan. Proceedings. *Environ Health Perspect* 1990;87:1-178.
193. Nagata T, Ikeda M, Nakayama F. Changing state of gastric cancer in Japan. Histologic perspective of the past 76 years. *Am J Surg* 1983;145(2):226-233.
194. Maruyama K, Gunven P, Okabayashi K, Sasako M, Kinoshita T. Lymph node metastases of gastric cancer. General pattern in 1931 patients. *Ann Surg* 1989;210(5):596-602.
195. Maruyama K, Sasako M, Kinoshita T. Wert der systematischen erweiterten Lymphknotendissektion: Ergebnisse in Japan. [Value of systematic extended lymph node dissection: results in Japan.] *Langenbecks Arch Chir Suppl Kongressbd* 1992:130-135.
196. Sakakibara N, Asakura A. [Evaluation of 5-year survival after extensive radical surgery for gastric carcinoma.] *Geka Chiryo* 1966;15(2):156-161.
197. Kodama Y, Kano T, Tamada R, Kumashiro R, Okamura T, Inokuchi K. Combined effect of prophylactic lymphadenectomy and long term combination chemotherapy for curatively resected carcinoma of the stomach. *Jpn J Surg* 1982;12(4):244-248.
198. Kaibara N, Okamoto T, Kimura O, et al. Possible role of lymph node dissection in the surgical treatment of gastric cancer with disseminating peritoneal metastasis. *Jpn J Surg* 1983;13(5):404-408.
199. Manual for Staging of Cancer, 3rd ed. Philadelphia: Lippincott, 1988.
200. Hutter RV. At last: worldwide agreement on the staging of cancer. *Arch Surg* 1987;122(11):1235-1239.
201. Bollschweiler E, Boettcher K, Hoelscher AH, et al. Is the prognosis for Japanese and German patients with gastric cancer really different? *Cancer (Phila)* 1993;71(10):2918-2925.
202. Fielding JW. Gastric cancer: different diseases. *Br J Surg* 1989;76(12):1227.
203. Kodama Y, Sugimachi K, Soejima K, Matsusaka T, Inokuchi K. Evaluation of extensive lymph node dissection for carcinoma of the stomach. *World J Surg* 1981;5(2):241-248.
204. de Aretxabala X, Konishi K, Yonemura Y, et al. Node dissection in gastric cancer. *Br J Surg* 1987;74(9):770-773.
205. Csendes A, Caracci M, Parr G, Pavez J, Venturelli A. [Clinical and therapeutic aspects of gastric cancer (1973-1979). A cooperative interhospital study.] *Rev Med Chil* 1983;111(3):262-267.
206. Shiu MH, Moore E, Sanders M, et al. Influence of the extent of resection on survival after curative treatment of gastric carcinoma. A retrospective multivariate analysis. *Arch Surg* 1987;122(11):1347-1351.
207. Hundahl SA, Stemmermann GN, Oishi A. Racial factors cannot explain superior Japanese outcomes in stomach cancer. *Arch Surg* 1996;131(2):170-175.
208. Miwa K. Evolution of the TNM classification of stomach cancer and proposal for its rational stage grouping. *Jpn J Clin Oncol* 1984;14(3):385-410.
209. Dent DM. Radical surgery for curable gastric carcinoma. *S Afr Med J* 1994;84(2):56-57.
210. Dent DM, Madden MV, Price SK. Randomized comparison of R1 and R2 gastrectomy for gastric carcinoma. *Br J Surg* 1988;75(2):110-112.
211. Gouzi JL, Huguier M, Fagniez PL, et al. Total versus subtotal gastrectomy for adenocarcinoma of the gastric antrum. A French prospective controlled study. *Ann Surg* 1989;209(2):162-166.
212. McNeer G, Bowden L, Booner RJ, McPeak CJ. Elective total gastrectomy for cancer of the stomach: end results. *Ann Surg* 1974;180(2):252-256.
213. Bozzetti F, Marubini E, Bonfanti G, et al. Total versus subtotal gastrectomy: surgical morbidity and mortality rates in a multicenter Italian randomized trial. The Italian Gastrointestinal Tumor Study Group. *Ann Surg* 1997;226(5):613-620.
214. Bozzetti F, Marubini E, Bonfanti G, Miceli R, Piano C, Gennari L. Subtotal versus total gastrectomy for gastric cancer: five-year survival rates in a multicenter randomized Italian trial. Italian Gastrointestinal Tumor Study Group. *Ann Surg* 1999;230(2):170-178.
215. Robertson CS, Chung SC, Woods SD, et al. A prospective randomized trial comparing R1 subtotal gastrectomy with R3 total gastrectomy for antral cancer. *Ann Surg* 1994;220(2):176-182.
216. Cunha P, Cunha JF, Burnay MO, Galhordas A, Fernandes R, Calinas F. [Gastric adenocarcinoma and carcinoid.] *Acta Med Port* 1998;11(6):577-580.
217. Cuschieri A, Fayers P, Fielding J, et al. Postoperative morbidity and mortality after D1 and D2 resections for gastric cancer: preliminary results of the MRC randomised controlled surgical trial. The Surgical Cooperative Group. *Lancet* 1996;347(9007):995-999.
218. Cuschieri A, Weeden S, Fielding J, et al. Patient survival after D1 and D2 resections for gastric cancer: long-term results of the MRC randomised surgical trial. Surgical Co-operative Group. *Br J Cancer* 1999;79(9-10):1522-1530.
219. Bonenkamp JJ, Hermans J, Sasako M, van de Velde CJ. Extended lymph-node dissection for gastric cancer. Dutch Gastric Cancer Group. *N Engl J Med* 1999;340(12):908-914.
220. Bonenkamp JJ, Songun I, Hermans J, et al. Randomised comparison of morbidity after D1 and D2 dissection for gastric cancer in 996 Dutch patients. *Lancet* 1995;345(8952):745-748.
221. The general rules for gastric cancer study in surgery. *Jpn J Surg* 1973;3(1):61-71.
222. Hartgrink HH, van de Velde CJ, Putter H, et al. Extended lymph node dissection for gastric cancer: who may benefit? Final results of the randomized Dutch gastric cancer group trial. *J Clin Oncol* 2004;22(11):2069-2077.
223. Maruyama K, Sasako M, Kinoshita T, Sano T, Katai H, Okajima K. Pancreas-preserving total gastrectomy for proximal gastric cancer. *World J Surg* 1995;19(4):532-536.
224. Uyama I, Ogiwara H, Takahara T, et al. Spleen- and pancreas-preserving total gastrectomy with superextended lymphadenectomy including dissection of the para-aortic lymph nodes for gastric cancer. *J Surg Oncol* 1996;63(4):268-270.
225. Kaminishi M, Shimoyama S, Yamaguchi H, et al. Results of subtotal gastrectomy with complete dissection of the N2 lymph nodes preserving the spleen and pancreas in surgery for gastric cancer. *Hepatogastroenterology* 1994;41(4):384-387.
226. Sano T. Update on D2 versus D4 trial. Presented at: 4th International Gastric Cancer Congress, 2001; New York.
227. Baba M, Hokita S, Natsugoe S, et al. Paraaortic lymphadenectomy in patients with advanced carcinoma of the upper-third of the stomach. *Hepatogastroenterology* 2000;47(33):893-896.
228. De Manzoni G, Di Leo A, Guglielmi A, et al. [Abdominal metastasis of cardiac adenocarcinoma.] *Minerva Chir* 2000;55(3):105-111.
229. Kunisaki C, Shimada H, Yamaoka H, et al. Indications for paraaortic lymph node dissection in gastric cancer patients with paraaortic lymph node involvement. *Hepatogastroenterology* 2000;47(32):586-589.
230. Kunisaki C, Shimada H, Yamaoka H, et al. Significance of para-aortic lymph node dissection in advanced gastric cancer. *Hepatogastroenterology* 1999;46(28):2635-2642.
231. De Manzoni G, Di Leo A, Borzellino G, et al. [Para-aortic lymph node involvement in gastric adenocarcinoma.] *Ann Chir* 2001;126(4):302-306; discussion 306-307.

232. Hartgrink HH, Van De Velde CJ, Putter H, et al. Extended lymph node dissection for gastric cancer: who may benefit? Final results of the Randomized Dutch Gastric Cancer Group Trial. *J Clin Oncol* 2004;22:2069–2077.
233. Sasako M, Katai H, Sano T, Maruyama K. Management of complications after gastrectomy with extended lymphadenectomy. *Surg Oncol* 2000;9(1):31–34.
234. Maerki SC, Luft HS, Hunt SS. Selecting categories of patients for regionalization. Implications of the relationship between volume and outcome. *Med Care* 1986;24(2):148–158.
235. Romano PS, Roos LL, Jollis JG. Adapting a clinical comorbidity index for use with ICD-9-CM administrative data: differing perspectives. *J Clin Epidemiol* 1993;46(10):1075–1079; discussion 1081–1090.
236. Hannan EL, Radzyner M, Rubin D, Dougherty J, Brennan MF. The influence of hospital and surgeon volume on in-hospital mortality for colectomy, gastrectomy, and lung lobectomy in patients with cancer. *Surgery (St. Louis)* 2002;131(1):6–15.
237. Kizer KW. The volume-outcome conundrum. *N Engl J Med* 2003;349(22):2159–2161.
238. Birkmeyer JD, Stukel TA, Siewers AE, Goodney PP, Wennberg DE, Lucas FL. Surgeon volume and operative mortality in the United States. *N Engl J Med* 2003;349(22):2117–2127.
239. Irvin TT, Bridger JE. Gastric cancer: an audit of 122 consecutive cases and the results of R1 gastrectomy. *Br J Surg* 1988;75(2):106–109.
240. Luft HS. Hospital Volume, Physician Volume, and Patient Outcomes: Assessing the Evidence. Ann Arbor: Health Administration Press Perspectives, 1990.
241. Parikh D, Johnson M, Chagla L, Lowe D, McCulloch P. D2 gastrectomy: lessons from a prospective audit of the learning curve. *Br J Surg* 1996;83(11):1595–1599.
242. Kampschoer GH, Maruyama K, van de Velde CJ, Sasako M, Kinoshita T, Okabayashi K. Computer analysis in making preoperative decisions: a rational approach to lymph node dissection in gastric cancer patients. *Br J Surg* 1989;76(9):905–908.
243. Bollschweiler E, Boettcher K, Hoelscher AH, et al. Preoperative assessment of lymph node metastases in patients with gastric cancer: evaluation of the Maruyama computer program. *Br J Surg* 1992;79(2):156–160.
244. Guadagni S, de Manzoni G, Catarci M, et al. Evaluation of the Maruyama computer program accuracy for preoperative estimation of lymph node metastases from gastric cancer. *World J Surg* 2000;24(12):1550–1558.
245. Siewert JR, Kelsen D, Maruyama K, et al. Gastric cancer diagnosis and treatment: an interactive training program. Springer Electronic Media [CD-ROM]. New York: Springer, 2000.
246. Hundahl SA, Macdonald JS, Benedetti J, Fitzsimmons T. Surgical treatment variation in a prospective, randomized trial of chemoradiotherapy in gastric cancer: the effect of undertreatment. *Ann Surg Oncol* 2002;9(3):278–286.
247. Hundahl SA, Macdonald JS, Benedetti J. Durable survival impact of “Low Maruyama Index Surgery” in a trial of adjuvant chemoradiation for gastric cancer. 2004 ASCO GI Symposium, San Francisco, January 22, 2004, p 48.
248. Hundahl SA, Macdonald JS, Benedetti J. Durable survival impact of “Low Maruyama Index Surgery” in a trial of adjuvant chemoradiation for gastric cancer. San Francisco: 2004 ASCO GI Symposium; January 22, 2004. Abstract #48.
249. Peeters KCMJ, Hundahl SA, Kranenbarg EK, Hartgrink H, van de Velde CJH. “Low-Maruyama-Index” surgery for gastric cancer—a blinded re-analysis of the Dutch D1-D2 Trial. *World Journal of Surgery*. 2005; in press.
250. Ono H, Kondo H, Gotoda T, et al. Endoscopic mucosal resection for treatment of early gastric cancer. *Gut* 2001;48(2):225–229.
251. Pathirana A, Poston GJ. Lessons from Japan: endoscopic management of early gastric and oesophageal cancer. *Eur J Surg Oncol* 2001;27(1):9–16.
252. Sano T, Katai H, Sasako M, Maruyama K. The management of early gastric cancer. *Surg Oncol* 2000;9(1):17–22.
253. Sasako M. Treatment of early gastric cancer. *Chir Ital* 1997;49(3):9–13.
254. Hiki Y. [Endoscopic mucosal resection (EMR) for early gastric cancer.] *Nippon Geka Gakkai Zasshi* 1996;97(4):273–278.
255. Kobayashi T, Kazui T, Kimura T. Surgical local resection for early gastric cancer. *Surg Laparosc Endosc Percutan Tech* 2003;13(5):299–303.
256. Yamamoto H, Sekine Y, Higashizawa T, et al. Successful en bloc resection of a large superficial gastric cancer by using sodium hyaluronate and electrocautery incision forceps. *Gastrointest Endosc* 2001;54(5):629–632.
257. Yoshikane H, Sakakibara A, Hidano H, Niwa Y, Goto H, Yokoi T. Piecemeal endoscopic aspiration mucosectomy for large superficial intramucosal tumors of the stomach. *Endoscopy* 2001;33(9):795–799.
258. Kobayashi T, Gotohda T, Tamakawa K, Ueda H, Kakizoe T. Magnetic anchor for more effective endoscopic mucosal resection. *Jpn J Clin Oncol* 2004;34(3):118–123.
259. Kuwano H, Mochiki E, Asao T, Kato H, Shimura T, Tsutsumi S. Double endoscopic intraluminal operation for upper digestive tract diseases: proposal of a novel procedure. *Ann Surg* 2004;239(1):22–27.
260. Kondo H, Gotoda T, Ono H, et al. Percutaneous traction-assisted EMR by using an insulation-tipped electrosurgical knife for early stage gastric cancer. *Gastrointest Endosc* 2004;59(2):284–288.
261. Gotoda T, Yanagisawa A, Sasako M, et al. Incidence of lymph node metastasis from early gastric cancer: estimation with a large number of cases at two large centers. *Gastric Cancer* 2000;3(4):219–225.
262. Smalley SR, Gunderson L, Tepper J, et al. Gastric surgical adjuvant radiotherapy consensus report: rationale and treatment implementation. *Int J Radiat Oncol Biol Phys* 2002;52(2):283–293.
263. Moertel CG, Childs DS Jr, Reitemeier RJ, Colby MY Jr, Holbrook MA. Combined 5-fluorouracil and supervoltage radiation therapy of locally unresectable gastrointestinal cancer. *Lancet* 1969;2(7626):865–867.
264. Holbrook MA. Cancer of the gastrointestinal tract. Radiation therapy. *JaAMA* 1974;228(10):1289–1290.
265. Schein PS, Smith FP, Woolley PV, Ahlgren JD. Current management of advanced and locally unresectable gastric carcinoma. *Cancer (Phila)* 1982;50(suppl 11):2590–2596.
266. Smalley S, Gunderson LL. Stomach. In: Perez C, Brady LW (eds). *Principles and Practice of Radiation Oncology*. Philadelphia: Lippincott-Raven, 1997.
267. Gunderson LL, Sosin H. Adenocarcinoma of the stomach: areas of failure in a re-operation series (second or symptomatic look) clinicopathologic correlation and implications for adjuvant therapy. *Int J Radiat Oncol Biol Phys* 1982;8(1):1–11.
268. Landry J, Tepper JE, Wood WC, Moulton EO, Koerner F, Sullinger J. Patterns of failure following curative resection of gastric carcinoma. *Int J Radiat Oncol Biol Phys* 1990;19(6):1357–1362.
269. McNeer G, Vandenberg H Jr, Donn FY, Bowden L. A critical evaluation of subtotal gastrectomy for the cure of cancer of the stomach. *Ann Surg* 1951;134(1):2–7.
270. Thompson FB, Robbins RE. Local recurrence following subtotal resection for gastric carcinoma. *Surg Gynecol Obstet* 1952;95:341–344.
271. Gunderson LL, Sosin H. Areas of failure found at reoperation (second or symptomatic look) following “curative surgery” for adenocarcinoma of the rectum. Clinicopathologic correlation and implications for adjuvant therapy. *Cancer (Phila)* 1974;34(4):1278–1292.
272. Macdonald JS, Smalley SR, Benedetti J, Hundahl SA et al. Chemoradiotherapy after surgery compared with surgery alone

- for adenocarcinoma of the stomach or gastroesophageal junction. *N Engl J Med* 2001;345(10):725-730.
273. Macdonald JS. Postoperative combined radiation and chemotherapy improves disease-free survival (DFS) and overall survival (OS) in resected adenocarcinoma of the stomach and gastroesophageal junction: update of the results of Intergroup Study INT-0116 (SWOG 9008). Presented at: 2004 Gastrointestinal Cancers Symposium, 2004, San Francisco.
  274. Kelsen DP. Postoperative adjuvant chemoradiation therapy for patients with resected gastric cancer: intergroup 116. *J Clin Oncol* 2000;18(suppl 21):32S-34S.
  275. Takahashi T, Sawai K, Hagiwara A, Takahashi S, Seiki K, Tokuda H. Type-oriented therapy for gastric cancer effective for lymph node metastasis: management of lymph node metastasis using activated carbon particles adsorbing an anticancer agent. *Semin Surg Oncol* 1991;7(6):378-383.
  276. Rosen HR, Jatzko G, Repse S, et al. Adjuvant intraperitoneal chemotherapy with carbon-adsorbed mitomycin in patients with gastric cancer: results of a randomized multicenter trial of the Austrian Working Group for Surgical Oncology. *J Clin Oncol* 1998;16(8):2733-2738.
  277. Schiessel R, Funovics J, Schick B, et al. Adjuvant intraperitoneal cisplatin therapy in patients with operated gastric carcinoma: results of a randomized trial. *Acta Med Aust* 1989;16(3-4):68-69.
  278. Sugimachi K, Maehara Y, Akazawa K, et al. Postoperative chemotherapy including intraperitoneal and intradermal administration of the streptococcal preparation OK-432 for patients with gastric cancer and peritoneal dissemination: a prospective randomized study. *Cancer Chemother Pharmacol* 1994;33(5):366-370.
  279. Leichman L, Silberman H, Leichman CG, et al. Preoperative systemic chemotherapy followed by adjuvant postoperative intraperitoneal therapy for gastric cancer: a University of Southern California pilot program. *J Clin Oncol* 1992;10(12):1933-1942.
  280. Glehen O, Mohamed F, Gilly FN. Peritoneal carcinomatosis from digestive tract cancer: new management by cytoreductive surgery and intraperitoneal chemohyperthermia. *Lancet Oncol* 2004;5(4):219-228.
  281. Sugarbaker PH, Yu W, Yonemura Y. Gastrectomy, peritonectomy, and perioperative intraperitoneal chemotherapy: the evolution of treatment strategies for advanced gastric cancer. *Semin Surg Oncol* 2003;21(4):233-248.
  282. Hall JJ, Loggie BW, Shen P, et al. Cytoreductive surgery with intraperitoneal hyperthermic chemotherapy for advanced gastric cancer. *J Gastrointest Surg* 2004;8(4):454-463.
  283. Yu W, Whang I, Chung HY, Averbach A, Sugarbaker PH. Indications for early postoperative intraperitoneal chemotherapy of advanced gastric cancer: results of a prospective randomized trial. *World J Surg* 2001;25(8):985-990.
  284. Yu W, Whang I, Suh I, Averbach A, Chang D, Sugarbaker PH. Prospective randomized trial of early postoperative intraperitoneal chemotherapy as an adjuvant to resectable gastric cancer. *Ann Surg* 1998;228(3):347-354.
  285. Hermans J, Bonenkamp JJ, Boon MC, et al. Adjuvant therapy after curative resection for gastric cancer: meta-analysis of randomized trials. *J Clin Oncol* 1993;11(8):1441-1447.
  286. Pignon JP, Ducreux M, Rougier P. Meta-analysis of adjuvant chemotherapy in gastric cancer: a critical reappraisal. *J Clin Oncol* 1994;12(4):877-878.
  287. Hermans S, Benekamp K. In reply. *J Clin Oncol* 1994;12:879-880.
  288. Earle CC, Maroun JA. Adjuvant chemotherapy after curative resection for gastric cancer in non-Asian patients: revisiting a meta-analysis of randomised trials. *Eur J Cancer* 1999;35(7):1059-1064.
  289. Mari E, Floriani I, Tinazzi A, et al. Efficacy of adjuvant chemotherapy after curative resection for gastric cancer: a meta-analysis of published randomised trials. A study of the GISCAD (Gruppo Italiano per lo Studio dei Carcinomi dell'Apparato Digerente). *Ann Oncol* 2000;11(7):837-843.
  290. Estape J, Grau JJ, Lcobendas F, et al. Mitomycin C as an adjuvant treatment to resected gastric cancer. A 10- year follow-up. *Ann Surg* 1991;213(3):219-221.
  291. Grau JJ, Estape J, Alcobendas F, Pera C, Daniels M, Teres J. Positive results of adjuvant mitomycin-C in resected gastric cancer: a randomised trial on 134 patients. *Eur J Cancer* 1993;3:340-342.
  292. Chou FF, Sheen-Chen SM, Liu PP, Chen FC. Adjuvant chemotherapy for resectable gastric cancer: a preliminary report. *J Surg Oncol* 1994;57(4):239-242.
  293. Douglas HO, Stablein DM. A comparison of combination chemotherapy and combined modality therapy for locally advanced gastric carcinoma. Gastrointestinal Tumor Study Group. *Cancer (Phila)* 1982;49(9):1771-1777.
  294. Cirera L, Balil A, Batiste-Alentorn E, et al. Randomized clinical trial of adjuvant mitomycin plus tegafur in patients with resected stage III gastric cancer. *J Clin Oncol* 1999;17(12):3810-3815.
  295. Neri B, de Leonardis V, Romano S, et al. Adjuvant chemotherapy after gastric resection in node-positive cancer patients: a multicentre randomised study. *Br J Cancer* 1996;73(4):549-552.
  296. Panzini I, Gianni L, Fattori PP, et al. Adjuvant chemotherapy in gastric cancer: a meta-analysis of randomized trials and a comparison with previous meta-analyses. *Tumori* 2002;88(1):21-27.
  297. Janunger KG, Hafstrom L, Nygren P, Glimelius B. A systematic overview of chemotherapy effects in gastric cancer. *Acta Oncol* 2001;40(2-3):309-326.
  298. Nakajima T, Ota K, Ishihara S, Oyama S, Nishi M, Hamashima N. [Meta-analysis of 10 postoperative adjuvant chemotherapies for gastric cancer in CIH.] *Gan To Kagaku Ryoho* 1994;21(11):1800-1805.
  299. Nakajima T, Takahashi T, Takagi K, Kuno K, Kajitani T. Comparison of 5-fluorouracil with fluorouracil in adjuvant chemotherapies with combined inductive and maintenance therapies for gastric cancer. *J Clin Oncol* 1984;2(12):1366-1371.
  300. Engstrom PF, Lavin PT, Douglass HO Jr, Brunner KW. Postoperative adjuvant 5-fluorouracil plus methyl-CCNU therapy for gastric cancer patients. Eastern Cooperative Oncology Group study (EST 3275). *Cancer (Phila)* 1985;55(9):1868-1873.
  301. Coombes RC, Schein PS, Chilvers CE, et al. A randomized trial comparing adjuvant fluorouracil, doxorubicin, and mitomycin with no treatment in operable gastric cancer. International Collaborative Cancer Group. *J Clin Oncol* 1990;8(8):1362-1369.
  302. Krook JE, O'Connell MJ, Wieand HS, et al. A prospective, randomized evaluation of intensive-course 5-fluorouracil plus doxorubicin as surgical adjuvant chemotherapy for resected gastric cancer. *Cancer (Phila)* 1991;67(10):2454-2458.
  303. Hallissey MT, Dunn JA, Ward LC, Allum WH. The second British Stomach Cancer Group trial of adjuvant radiotherapy or chemotherapy in resectable gastric cancer: five-year follow-up. *Lancet* 1994;343(8909):1309-1312.
  304. Macdonald JS, Fleming TR, Peterson RF, et al. Adjuvant chemotherapy with 5-FU, adriamycin, and mitomycin-C (FAM) versus surgery alone for patients with locally advanced gastric adenocarcinoma: A Southwest Oncology Group study. *Ann Surg Oncol* 1995;2(6):488-494.
  305. Tsavaris N, Tentas K, Kosmidis P, et al. A randomized trial comparing adjuvant fluorouracil, epirubicin, and mitomycin with no treatment in operable gastric cancer. *Chemotherapy* 1996;42(3):220-226.
  306. Nakajima T, Nashimoto A, Kitamura M, et al. Adjuvant mitomycin and fluorouracil followed by oral uracil plus tegafur in serosa-negative gastric cancer: a randomised trial. Gastric Cancer Surgical Study Group. *Lancet* 1999;354(9175):273-277.



307. Langman MJ, Dunn JA, Whiting JL, et al. Prospective, double-blind, placebo-controlled randomized trial of cimetidine in gastric cancer. British Stomach Cancer Group. *Br J Cancer* 1999;81(8):1356-1362.
308. Nashimoto A, Nakajima T, Furukawa H, et al. Randomized trial of adjuvant chemotherapy with mitomycin, fluorouracil, and cytosine arabinoside followed by oral fluorouracil in serosa-negative gastric cancer: Japan Clinical Oncology Group 9206-1. *J Clin Oncol* 2003;21(12):2282-2287.
309. Chipponi J, Huguier M, Pezet D, et al. Randomized trial of adjuvant chemotherapy after curative resection for gastric cancer. *Am J Surg* 2004;187(3):440-445.
310. Sato Y, Kondo M, Kohashi S, et al. A randomized controlled study of immunochemotherapy with OK-432 after curative surgery for gastric cancer. *J Immunother* 2004;27(5):394-397.
311. Hartgrink HH, van de Velde CJ, Putter H, et al. Neo-adjuvant chemotherapy for operable gastric cancer: long term results of the Dutch randomised FAMTX trial. *Eur J Surg Oncol* 2004;30(6):643-649.
312. VanCutsem E. Neoadjuvant and adjuvant treatment of gastric cancer. Presented at 2004 Gastrointestinal Cancers Symposium, Jan. 22-24, 2004, San Francisco.
313. Cascinu S, Labianca R, Alessandrini P, et al. Intensive weekly chemotherapy for advanced gastric cancer using fluorouracil, cisplatin, epi-doxorubicin, 6S-leucovorin, glutathione, and filgrastim: a report from the Italian Group for the Study of Digestive Tract Cancer. *J Clin Oncol* 1997;15(11):3313-3319.
314. Crookes P, Leichman CG, Leichman L, et al. Systemic chemotherapy for gastric carcinoma followed by postoperative intraperitoneal therapy: a final report. *Cancer (Phila)* 1997;79(9):1767-1775.
315. Ilson DH, Saltz L, Enzinger P, et al. Phase II trial of weekly irinotecan plus cisplatin in advanced esophageal cancer. *J Clin Oncol* 1999;17(10):3270-3275.
316. Ridwelski K, Gebauer T, Fahlke J, et al. Combination chemotherapy with docetaxel and cisplatin for locally advanced and metastatic gastric cancer. *Ann Oncol* 2001;12(1):47-51.
317. Preusser P, Wilke H, Achterrath W, et al. Phase II study with the combination etoposide, doxorubicin, and cisplatin in advanced measurable gastric cancer. *J Clin Oncol* 1989;7(9):1310-1317.
318. Wils J, Bleiberg H, Dalesio O, et al. An EORTC Gastrointestinal Group evaluation of the combination of sequential methotrexate and 5-fluorouracil, combined with adriamycin in advanced measurable gastric cancer. *J Clin Oncol* 1986;4(12):1799-1803.
319. Wils JA, Klein HO, Wagener DJ, et al. Sequential high-dose methotrexate and fluorouracil combined with doxorubicin: a step ahead in the treatment of advanced gastric cancer. A trial of the European Organization for Research and Treatment of Cancer Gastrointestinal Tract Cooperative Group. *J Clin Oncol* 1991;9(5):827-831.
320. Macdonald JS. Chemotherapy in the management of gastric cancer. *J Clin Oncol* 2003;21(suppl 23):276s-279s.
321. Kelsen D, Atiq OT, Saltz L, et al. FAMTX versus etoposide, doxorubicin, and cisplatin: a random assignment trial in gastric cancer. *J Clin Oncol* 1992;10(4):541-548.
322. Webb A, Cunningham D, Scarffe JH, et al. Randomized trial comparing epirubicin, cisplatin, and fluorouracil versus fluorouracil, doxorubicin, and methotrexate in advanced esophagogastric cancer. *J Clin Oncol* 1997;15(1):261-267.
323. Ajani JA. Irinotecan and other agents in upper gastrointestinal and colorectal carcinomas. The University of Texas M.D. Anderson Cancer Center Investigators' Workshop, vol 3. Introduction. *Oncology (Huntingt)* 2003;17(9 suppl 8):10-12.
324. Ross P, Nicolson M, Cunningham D, et al. Prospective randomized trial comparing mitomycin, cisplatin, and protracted venous-infusion fluorouracil (PVI 5-FU) with epirubicin, cisplatin, and PVI 5-FU in advanced esophagogastric cancer. *J Clin Oncol* 2002;20(8):1996-2004.
325. Fink U, Stein HJ, Schuhmacher C, Wilke HJ. Neoadjuvant chemotherapy for gastric cancer: update. *World J Surg* 1995;19(4):509-516.
326. Fink U, Schuhmacher C, Stein HJ, et al. Preoperative chemotherapy for stage III-IV gastric carcinoma: feasibility, response and outcome after complete resection. *Br J Surg* 1995;82(9):1248-1252.
327. Ajani JA, Mansfield PF, Ota DM. Potentially resectable gastric carcinoma: current approaches to staging and preoperative therapy. *World J Surg* 1995;19(2):216-220.
328. Ochiai T, Sasako M, Mizuno S, et al. Hepatic resection for metastatic tumours from gastric cancer: analysis of prognostic factors. *Br J Surg* 1994;81(8):1175-1178.
329. Grau JJ, Estape J, Fuster J, et al. Randomized trial of adjuvant chemotherapy with mitomycin plus fluorouracil versus mitomycin alone in resected locally advanced gastric cancer. *J Clin Oncol* 1998;16(3):1036-1039.